



2021 NEMA VIRTUAL CONFERENCE

NOVEMBER 15, 17, and 19, 2021

nema *NEW ENGLAND
MUSEUM ASSOCIATION*

Dear NEMA Friend:

Thank you so much for being part of the NEMA community and for your interest in the 103rd NEMA Conference. This year's event will once again be virtual because of our commitment to your safety and comfort, so I'd like to express my gratitude for your patience as we postpone our collective joy of connecting at an in-person conference.

That said, I believe the 2021 NEMA Conference will be a valuable experience for you and the museum field. It comes at a time when museum people are seeking information, connectedness, and inspiration to help them through continued challenges. And while a virtual conference can never fully replicate the in-person experience, I think you'll find enough high-quality sessions, discussions, and energy to boost your spirit and intellect in the days ahead.

I am so appreciative for all of those committed to our museum field who helped make the conference possible. We are offering more than 50+ sessions, thanks to our colleagues who want to share their stories and expertise. Our keynote presenters, Dr. Lisa Wong and Michael Bobbitt, will provide insights into today's most pressing topics: resilience and healing, social justice, and organizational sustainability.

I'm especially thankful for our sponsors, including many of New England's state arts and humanities councils, who have stepped up their support of the NEMA conference. Sponsorship funding has allowed us to once again offer a range of registration options that makes the conference accessible to everyone regardless of their financial circumstances. We encourage all who are able to sign up at our full registration rate; because the conference represents more than half of our annual budget, this enables NEMA to advocate for the field and deliver year-round programs. We also have several registration options for those experiencing economic hardship, including a day rate, student rate, reduced rate, and scholarships.

There is one person in particular I'd like to thank for making the conference possible, and that's you. Your participation is vital to making the 2021 NEMA Conference a success. We welcome your voice, your expertise, and your insights to help our field grow, innovate, and heal. Thanks again for being part of our community. And I look forward to seeing you in November!

Sincerely,

A handwritten signature in blue ink, appearing to read 'Dan Yaeger', with a large, stylized flourish extending from the end of the name.

Dan Yaeger
Executive Director

REGISTER TODAY!

Connect

2021 is our opportunity. 2020 was a year of challenge and change, so what happens next? Where do we find ways to become re-inspired in our work, or newly inspired? What programs and connections do we rebuild, and what can we create that suits new needs? How do we rejoin the museum workforce, and what can we do to welcome new colleagues? You won't want to miss out on the fun of NEMA 2021!

**Early-Bird
Deadline:
Oct. 22**

Engage

With 50+ sessions, multiple keynotes, networking lunches, and a virtual exhibit hall, you have a variety of opportunities to connect and engage with other museum professionals.

- **Virtual Platform** – Conference is accessible at the click of a button, no matter where you are, or what time zone.
- **Tiered Pricing** – The NEMA Conference is a great value, with pricing options and scholarships that make it accessible and affordable to everyone.
- **Be Social** – Follow #NEMA2021 on social media, attend receptions and affinity lunches, or host your own networking events on the conference platform all week.
- **Industry Experts** – Learn about the latest innovative products and services in the NEMA Exhibit Hall. Chat with vendors and attend demos in their virtual booths.
- **Session Recordings** – Too many great topics to watch all at once? Miss a session that you wanted to attend? Most sessions will be recorded and available for registrants to access through the conference website and app up to three months post conference.
- **More to come!** We're continuing to expand the conference offerings with timely and relevant sessions between now and November.

SCHOLARSHIPS!
See page 25

Conference Preview

Need a refresher on the Whova app, or want to test your access to the conference platform? Join NEMA on November 8 at 4 pm for tips to make the most of your virtual conference experience. Conference facilitators and speakers are also invited to a special training session on October 18 or November 2, from 9:30-10:30 am.

NEMA Code of Conduct

All attendees agree to abide by the **NEMA Code of Conduct** in order for us to work together toward inclusion, safety, respect, and professionalism. [Contact us here](#) if you have questions.

A Special Thank You to our Sponsors!

cThumanities | **Connecticut** Department of Economic and Community Development, Office of The Arts
COLLECTOR SYSTEMS | **mass HUMANITIES** | **INTERNATIONAL TENNIS HALL OF FAME** | **UMASS BOSTON** GRADUATE PROGRAMS IN HISTORY, PUBLIC HISTORY, AND ARCHIVES, UNIVERSITY OF MASSACHUSETTS BOSTON
Museum Search & Reference | **Tufts University** GRADUATE SCHOOL OF ARTS AND SCIENCES, **Museum Studies** | **M T S** Museum Textile Services | **LUCIDEA** DEVELOPER OF ARGUS; INNOVATIVE, UNRIVALED MUSEUM COLLECTION MANAGEMENT SOFTWARE
CatalogIt | **TRU VUE** | **THE ARCANIA WORKSHOP LLC** | **Vermont Humanities** | **museum INSIGHTS** Master Planning for Museums
Mass Cultural Council | **RHODE ISLAND COUNCIL OF HUMANITIES** | **Documentary Educational Resources** | **NATIONAL ENDOWMENT FOR THE HUMANITIES**

Any views, findings, conclusions, or recommendations expressed during this conference, do not necessarily represent those of the National Endowment for the Humanities.

Monday, November 15

9:30 am – 3:45 pm
EXHIBIT HALL OPEN

9:30 – 10:30 am
WELCOME AND KEYNOTE PRESENTATION

Resilience, Healing, and Museums: A Conversation with Dr. Lisa Wong

Now more than ever the museum field needs resilience and healing – for ourselves and our audiences. Join us as we kick off the conference with



Dr. Lisa Wong from the Arts and Humanities Initiative at Harvard Medical School. Dr. Wong is a pediatrician, musician, and author dedicated to the healing arts of music and medicine, with deep insights into how cultural workers can leverage their personal and institutional assets to improve well-being. She will be in conversation with NEMA board member Brooke DiGiovanni Evans, Director of Visual Arts Education at Brigham & Women's Hospital.

10:30 – 10:45 am
BREAK

Explore the Exhibit Hall and chat with vendors, attend demos, and discover innovative services for our museum community.

10:45 am – 12:15 pm
CONCURRENT SESSIONS (90 minutes)

Crowdsourcing Within Reach: Big Impacts for Institutions of all Sizes

The best-known crowdsourced transcription projects are run by large, well-staffed institutions and can make such projects seem out of reach to smaller sites. Discover how Mount Auburn Cemetery, Historic New England, and the Center for Astrophysics | Harvard & Smithsonian started

and now manage their crowdsourced transcription projects. Learn about the unexpected benefits of crowdsourced projects including breaking down barriers to collections access, diversifying virtual volunteers, expanding your audience, and deepening understanding of your collections.

Facilitator: Elizabeth Casner, Collection Management Consultant, Mount Auburn Cemetery, MA

Speakers: Thom Burns, Curatorial Consultant, and Meg Winslow, Curator of Historical Collections & Archives, Mount Auburn Cemetery, MA; Nico Carver, Librarian for Collaborative Programs, and Katie Frey, Assistant Head Librarian, Digital Technologies, the Center for Astrophysics | Harvard & Smithsonian; Sam Correia, Assistant Community Coordinator, Project PHaEDRA, MA; Lorna Condon, Senior Curator of Library and Archives, and Susan Jarvis, Volunteer, Historic New England, MA

Sponsored by Lucidea

Diversity Recruiting to Make Museum Boards, Leaders and Managers More Inclusive

Museums want to diversify their leadership and staffs, but in New England, outside certain cities, those recruiting often feel their networks lack diversity, that they don't have inclusive resources to draw upon, or they don't have enough contacts with BIPOCs to recruit successfully. The session will feature experts to share methods, resources and contacts to help boards, directors and managers reach out/network to recruit inclusively; also advising on preparing your museum to onboard BIPOC colleagues.

Facilitator: Ida Tomlin, Senior Search Consultant, Museum Search & Reference, NH

Speakers: Christian Greer, President and CEO, Michigan Science Center, Marilyn Hoffman, Principal, Museum Search & Reference, NH; Katherine McNamee, Director, Human Resources, American Alliance of Museums, VA; Kyera Singleton, Executive Director, Royall House and Slave Quarters, MA

Sponsored by Collector Systems, Inc.

K-12 Museum Education in 2021: Best Practices, New Paradigms, and Innovative Solutions

Creating Meaningful Museum Experiences for K-12 Audiences: How to Connect with Teachers and Engage Students (Rowman & Littlefield/AAM, 2021) is the first book in more than a decade to comprehensively consider K-12 programming in museums. Join four of the book's contributors in a roundtable session, chaired by editor Tara Young, to hear about several of the trends, best practices, and creative ideas that serve as an organizing framework for the book, and then engage in conversation in small facilitated groups.

Facilitator: Tara Young, Independent Museum Professional, Tara Young Consulting, MA

Speakers: Melissa Higgins, Senior Director, STEAM, Boston Children's Museum, MA; Deanna Nebel, Education Instructor, Rock n' Roll Hall of Fame, OH; Jason Pallas, Manager of Community Engagement and Arts Learning, Smart Museum of Art, University of Chicago, IL

Power, Trauma, and Integrity: Moral Distress in the Museum Field

The pandemic has cast in sharp relief the many ways in which museum work can be difficult if not traumatic. The layoffs, economic uncertainty, and social justice reckoning our field has experienced over the past 18 months have added to pre-existing conditions of pay inequity, toxic workplace cultures, governance dysfunction, sexual harassment, and privileged power dynamics that many museum workers encounter daily. In this think tank session, we'll explore these issues together, using your real-world experiences, through the lens of moral distress, the suffering that occurs when one participates in systems that conflict with one's values and sense of integrity. Our goal will be to identify tools and strategies for museum professionals to use to manage their emotional well-being while contributing to the health of their workplace – and the field itself.

Speakers: Raney Bench, Executive Director, Mount Desert Island Historical Society, ME (NEMA Board); Dan Yaeger, Executive Director, New England Museum Association, MA

Re/Interpreting Reinterpretation: Challenging Traditional Reinterpretation Processes While Rewriting an Inclusive Narrative

Learn how four small museums are working to reframe narratives and create new interpretive structures in order to acknowledge stories that have been hidden or ignored, and to work

towards justice and equity. The museums are using community networks, social action organizations, and the International Coalition of Sites of Conscience to embrace systems of change and to encourage audience action. Panelists will share ways attendees can jumpstart the process at their sites.

Facilitator: Joan DiMartino, Museum Curator & Site Superintendent, Prudence Crandall Museum / CT State Historic Preservation Office

Speakers: Morgan Bengel, Museum Curator & Site Administrator, Old New-Gate Prison and Copper Mine, CT; Andrew Rowand, Museum Assistant, Eric Sloane Museum, CT; Elizabeth Shapiro, Director of Arts, Preservation, and Museums, Operations, Museums and Historic Preservation, State Historic Preservation Office, Dept. of Economic and Community Development, State of CT

12:15 – 1:30 pm EXHIBIT HALL

Learn from leaders in the museum field in this one-stop educational venue open to all attendees. Say "hello" and ask questions of our incredible vendors by using the booth chat and join in on a booth demonstration. Support our vendors who support NEMA.

12:30 – 1:15 pm DIRECTORS AND TRUSTEES LUNCH

Spend some quality time with museum leaders from New England and beyond. NEMA Executive Director Dan Yaeger will facilitate a discussion about how museums are navigating the ongoing pandemic, social justice strategies, economic challenges, and other issues of note. Bring your questions, stories, and solutions as we work together to identify best practices as they emerge in our field.

This session is limited to directors and trustees of museums and cultural organizations. Pre-registration is required.

Sponsored by The International Tennis Hall of Fame, Museum Search & Reference, and Tufts University Museum Studies Program

12:30 – 1:15 pm

PAG LUNCHES

Convene with your colleagues over lunch! These Professional Affinity Gatherings are open to all with interest in the field or topic. Specific discussion descriptions will be available closer to the conference. Today's gatherings include:

Curators

PAG Chairs: Tiffini Bowers, Head, Exhibitions & Engagement and Curator for Visual and Ephemeral Collections, John Hay Library, Brown University, RI; Tegan Kehoe, Exhibit and Education Specialist, Paul S. Russell, MD Museum of Medical History and Innovation, MA

Education

Connect with fellow educators in a virtual setting. Ask questions, share ideas, offer advice, and connect with a network of peers and mentors who can continue to provide inspiration, support, and resources long after this year's conference ends.

PAG Chairs: Amanda Goodheart Parks, Director of Education, New England Air Museum, CT; Erin Wederbrook Yuskaitis, Principal, Yellow Room Consulting LLC, MA

Historic Sites

PAG Chairs: Robin Sherman, Curator & Museum Manager, Castle in the Clouds, NH; Emma Stratton, Executive Director, American Independence Museum, NH

YEP PAG for Emerging Museum Professionals

Join us for lunch and meet your fellow Yeppers! Learn more about what our group offers, including information on upcoming professional development and networking events. We also want to hear from you! Share with us ideas for resources and topics that you would like to explore with us this next year.

PAG Chairs: Monica Andrews, Public Programs Associate, Shelburne Museum, VT; Lisa Evans, Interim Executive Director, St. Albans Museum, VT; Marie Palladino, Head of Educational Programs, The Mary Baker Eddy Library, MA; Emma Scheinmann, Curriculum Developer and Content Manager, National Museum of Industrial History, PA

1:30 – 2:30 pm

CONCURRENT SESSIONS (60 minutes)

Challenging Communications

The past few years in the museum field have provided ample opportunity for responding to community challenges through communication. What happens when those communication plans go astray? This panel will review helpful tips and proactive communication strategies as well as responding to challenging topics on-the-fly.

Facilitator: Julie Arrison-Bishop, Community Engagement Director, The House of the Seven Gables Settlement Association, MA

Speakers: Carrie Nash, Public Relations, Museum of Science, Boston, MA; Shannon Woodloe, Digital Storyteller, Delaware Art Museum, MD

Museum Mindfulness

Take a mindfulness break with meditation instructor Rhonda Schaller, who earlier this year introduced Mindfulness Based Stress Reduction practices to the NEMA community. Rhonda will lead a guided meditation and will be joined by members of the NEMA mindfulness group for an informal discussion.

Facilitator: Rhonda Schaller, Assistant Vice President for Student Affairs, Pratt Institute, NY



CatalogIt

Imagine Loving your CMS.

Learn More
www.catalogit.app/nema

Sports Museum as a Lens for Social Justice

In conjunction with the release of *Interpreting Sports History in Museums and Historic Sites*, this session aims to encourage practitioners to utilize sports interpretation to shape a more complete and holistic understanding of our world. This session will explore an impactful collaboration at the International Tennis Hall of Fame that positions the institution as a leader in connecting the sport past and present through the Black Lives Matter movement.

Facilitator: KathrynLeann Harris, Independent Museum Professional, KathrynLeann Harris Consulting, MA

Speakers: Tara Mello, 7th Grade Social Studies Teacher, Thompson Middle School, RI; Doug Stark, Museum Director, International Tennis Hall of Fame, RI; Valerie Tutson, Creative Director, Rhode Island Black Storytellers

Think Tank: Museums & Their Climate Change Impact

In 2019 the NEMA Conference presented a think tank session to examine how museums were dealing with issues around global climate change. Well, a lot has happened since then: more frequent and severe weather events, greater awareness of the existential threat of climate on collections and facilities, and even NEMA's recently-announced IMLS National Leadership Grant to measure climate impact in the museum sector. Join us for an update and bring your ideas!

Facilitator: Dan Yaeger, Executive Director, New England Museum Association, MA

Throw Out the Linear Path & Reimagine Your Professional Growth

The traditional idea of career growth in the museum field is linear—success means steadily climbing your way up the ladder from front-line staff to senior leadership. Let's challenge that idea by exploring new, creative models for what career growth can look like. You'll walk away with a new vision for your career trajectory in the changing job landscape, practical tools for shaping your professional goals, and a wider understanding of what it means to be a successful professional.

Facilitator: Carole Ann Penney, Strategic Career Coach, Penney Leadership, RI

Sponsored by Public History and Archives Tracks, History Department, University of Massachusetts Boston

2:30 – 2:45 pm
BREAK

2:45 – 3:45 pm CONCURRENT SESSIONS (60 minutes)

Digitizing Collections: A New Kind of Audience Engagement for Small Museums

Using the technology that we have on hand, we can create and shape our visitor experiences in new and engaging ways. By exploring the purpose and methods used to digitize collections, this session will explore how you can use your digitization project to generate new stories with the objects while not only increasing collections access but also creating new visitor experiences that engage and connect with the collection like never before!

Facilitator: Abby Battis, Associate Director for Collections, Historic Beverly, MA (PAG Chair)

Speaker: Jane Bowers, Exhibits Curator & Manager, Wenham Museum, MA

Sponsored by Collector Systems, Inc.

Museum Search & Reference
MARILYN HOFFMAN
EXECUTIVE SEARCH CONSULTING

Will Your Museum Be Searching for a Director, Chief Curator, or Educator?

We are a niche firm specializing in executive searches for museums.



Meet our Senior Search Consultants:

Marilyn Hoffman, Principal;
Dan Keegan, Connie Rosemont,
Scott Stevens, Ida Tomlin, Lora Urbanelli



SERVING YOU BETTER:

- Strong networks. National and international recruiting, diversity recruiting
- Results exceed the high expectations of boards and directors
- Expertise; up-to-date practice from a team of 5 former directors
- Excellent service and value
- Mission-driven; bringing insight, energy, and caring to your search

Clients include:

The Morgan Library, Denver Art Museum, Royal Ontario Museum, Park City Museum, Erie Art Museum, New Bedford Whaling Museum, Bruce Museum.

603-432-7929

Boston, MA | Washington, DC | Manchester, NH
SearchandRef@museum-search.com

Finding Purpose Amid a Pandemic: The Struggle and Triumph in Re-Imagining Maine Maritime Museum's Education Programs

In August 2020, Maine Maritime Museum launched an unprecedented education program, the Alternative Expeditionary Learning Semester, to serve a community need for in-person learning. The challenges in designing and implementing this program led staff to reimagine their approach to museum learning and its possibilities to serve the community. By sharing our story, we hope to inspire other educators forced to redefine their methods and navigate uncharted territory brought on by the challenges of 2020.

Speakers: Luke Gates-Milardo, Museum Educator; Kurt Spiridakis, Director of Watercraft and Traditional Skills; and Sarah Timm, Manager of Education, Maine Maritime Museum

Making Exhibits that "Hack the World": Non-Virtual Alternatives to the Gallery

Free The Museum is an initiative to activate the "museum experience" in everyday places, making them sites of engagement, reflection, activism, and learning. With "ubiquitous museology," public

spaces become cultural settings - galleries and "collections in situ." Through examples, we'll address the challenges of such projects and benefits - from new audiences and partnerships, to contributions of oral histories, to collection donations. Then you'll try applying Free The Museum's free tools on a sample location.

Facilitator: Betsy Loring, Principal, expLoring exhibits & engagement, LLC, MA (PAG Chair)

Speakers: Michael Burns, Partner and Chief of Experience Strategies, Quatrefoil Associates, MD; Diane Lee, Collections Manager, Fairfield Museum and History Center, CT

Sponsored by The Arcana Workshop, LLC

Re-Imagining Workspaces as Supportive and Equitable

Can you imagine a more supportive and equitable museum field? What does that look like? How has your museum addressed issues of equitable practices this past year? We know the pandemic resulted in a financial shock to all museums, but its effect on workers has not been equally distributed to all. From layoffs to increased caregiving responsibilities, the ramifications have been especially harsh on women and the



Study Public History at Boston's Public University

Graduate Programs in History, Public History, and Archives

at University of Massachusetts Boston

For more information, visit us online at www.umb.edu/history/grad
or contact Dr. Jane Becker, Director of Public History at jane.becker@umb.edu



pandemic may have long lasting consequences on racial and gender wage and employment gap. Join the Gender Equity in Museums Movement steering members to re-imagine our post-pandemic museum workspaces. Come ready to share your experiences, advice, and ideas as we develop key takeaways to move the field forward.

Facilitators: Andrea Crivello, Exhibition Manager, Christie's, NY; Ashanti Davis, Exhibition Manager, Fleet Science Center, CA; Scarlett V. Hoey, Director of Membership and Development, New England Museum Association, MA

2:45 – 5:00 pm
DOUBLE SESSION
(120 minutes)

Engaging Facilitation in a COVID World

Join your Education PAG Co-Chairs as we reimagine frontline training for museum educators in a post-COVID world. This participatory workshop will provide managers of frontline interpretative staff with the tools they need to implement inquiry-based facilitation at their museums as well as activities for confidence-boosting training in body language, diction, and movement. From VTS to improv, this workshop will blend fun and practicality into an impactful "how to" learning journey.

Speakers: Amanda Goodheart Parks, Director of Education, New England Air Museum, CT (PAG Chair); Erin Wederbrook Yuskaitis, Principal, Yellow Room Consulting LLC, MA (PAG Chair)

Sponsored by Collector Systems, Inc.

4:00 – 5:00 pm
CONCURRENT SESSIONS
(60 minutes)

Collections Conundrums: How Collections Storage Improvement Projects Fueled a Re-Evaluation of the Museum Collection

How do you make a building constructed for "temporary storage" in the 1960s work in 2020? How do you temporarily relocate 16,000 objects while you implement improvements? How do you deal with the collections questions and new projects that arise because of these processes? Join curatorial staff from Old Sturbridge Village to learn how they have approached these questions over the course of their recent storage improvement projects.

Speakers: Rebecca Beall, Collections Manager and Curator of Textiles; Katherine Fecteau, Assistant

Curator; and Brittany Guerrette, Collections and Research Public Programming Specialist, Old Sturbridge Village, MA

Sponsored by Tru Vue

Community Engagement and Co-curation in the Galleries: A Case Study from CT

Join staff at Yale Peabody Museum in discussing efforts to incorporate a DEAI lens into the museum's human culture galleries through community engagement and co-curation. Speakers will share successes, setbacks, and lessons learned through three case studies: 1) a curatorial partnership with a local nonprofit working with Syrian refugee populations; 2) a project by a youth program to interpret the diorama hall; and 3) a formative evaluation investigating accessibility, representation, and inclusive storytelling.

Facilitator: Neeti Jain, Graduate Research Fellow, Yale Peabody Museum of Natural History, CT

Speakers: Kellen Nixon, Principal, Nixon & Co., NC; Kailen Rogers, Associate Director for Exhibitions, Yale Peabody Museum of Natural History, CT; sci.CORPS staff: Emily Cervantes, Natasha Ghazali, Fiona Kathryn Kelly, Paula Mock

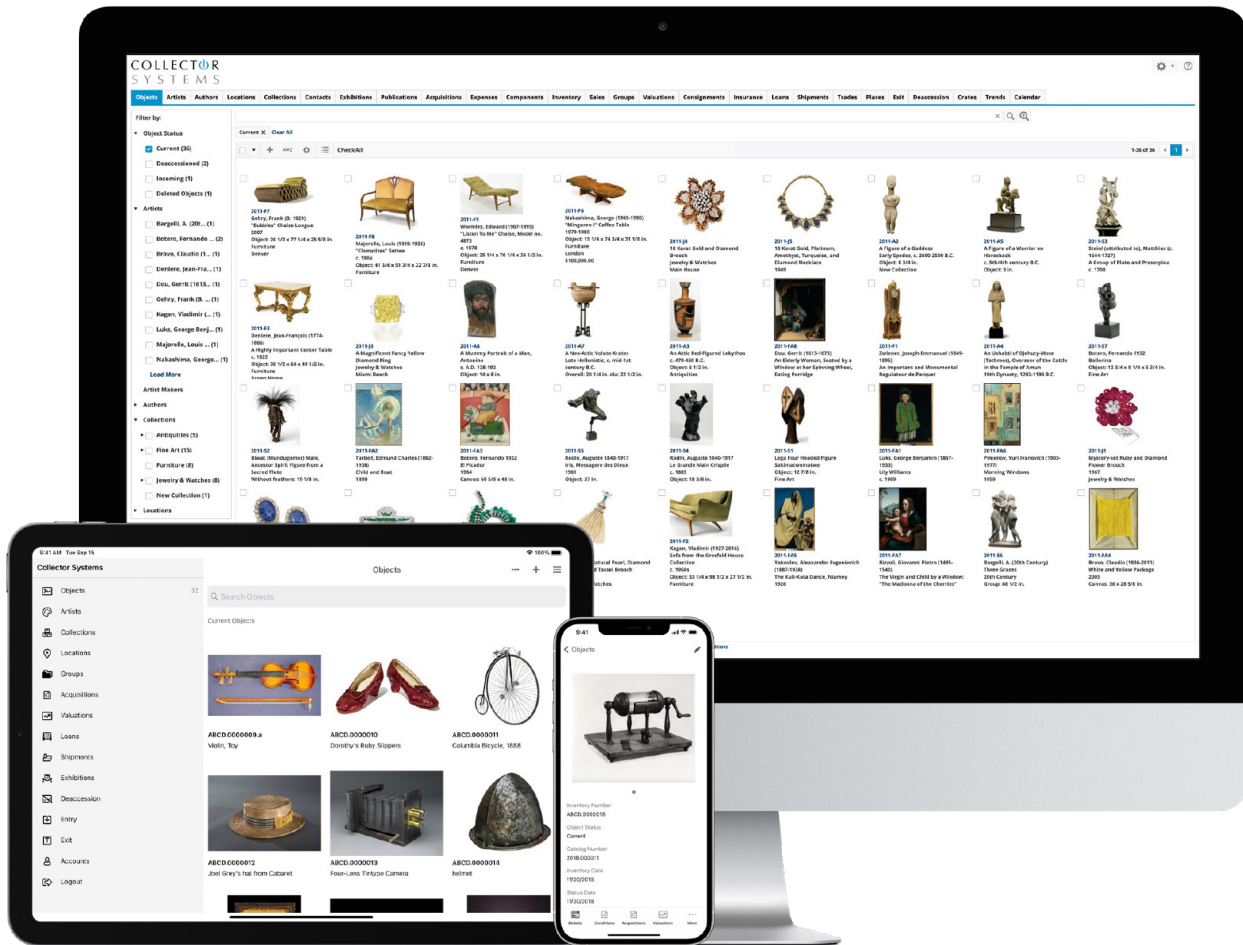
INTERNATIONAL
TENNIS HALL OF FAME®

MUSEUM & GROUNDS NOW OPEN!

TICKETS AT
tennisfame.com

194 BELLEVUE AVENUE, NEWPORT, RI

KIDS AGES 12 + UNDER
FREE



Powerful. Intuitive. Secure.
This CMS? Best there is. Stress level? None.

- Secure cloud-based solution
- iOS and Android apps
- New public Gallery
- New API
- New filtering capabilities
- New smart full text search
- Customized reports
- Mobile condition reporting
- Data migration services
- Superior client support
- Controlled vocabularies; built-in Nomenclature, AAT, ULAN, ITIS
- IIIF image support
- Location history and barcoding
- Loans and Exhibitions
- Crates and Shipping
- Entry, Exit, and Movements
- Accession and Deaccession

Tuesday, November 16

Joining a Board: How & Why

Serving on a board of directors is a great opportunity for professional development, networking, and service to the community, but sometimes board service can seem intimidating or inaccessible. Maybe you already have considered joining the board of NEMA or another organization you care about. In this session you'll hear perspectives on the benefits of serving on a board, what questions to ask before you join a board, and standard expectations of board members.

Facilitator: Cathy Saunders, Curator of Education, Lippitt House Museum, RI (NEMA Board)

Speakers: Elizabeth Francis, PhD, Executive Director, Rhode Island Council for the Humanities; Keith Tavares, Capacity Building Officer, Rhode Island Foundation; Christina Turner, Director of Education & Public Programs, New Bedford Whaling Museum, MA

Museum Membership: Town Hall

What does your museum membership look like now, in 2021? How have visitor and member needs changed in the last 18 months? How has the shift to virtual programming and exhibits impacted member outreach, marketing and grant reporting? Join colleagues and come ready to share in this interactive town hall exploring all things membership.

Facilitators: Genevieve Burgett, Membership Manager, Historic New England, MA; Kathleen Porter, Associate Director of Membership, The Trustees, MA

5:15 – 6:15 pm

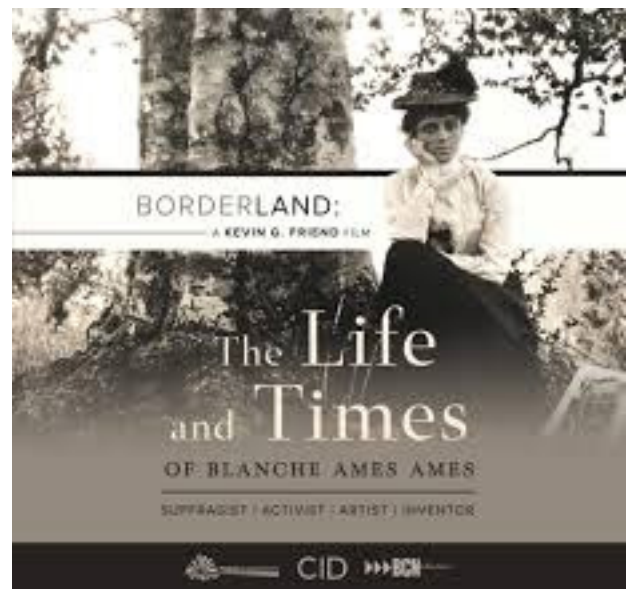
NEWCOMERS RECEPTION

New to the NEMA Conference? Join fellow newcomers for a reception filled with fun networking and engaging topic-based discussion. Bring your own beverage, snack, and smiling face.

4:00 – 5:30 pm

BORDERLAND: THE LIFE & TIMES OF BLANCHE AMES AMES FILM SCREENING

Join us for a screening of *Borderland: The Life and Times of Blanche Ames Ames* (55 minutes). This film is a deep dive into the fascinating life of Ames and her quest for voter rights and women's equality. It ties the struggles of her era to today's political climate where there is much work to be done. The screening will include a post-screening Q&A discussion. Sign-up on the registration form or you can sign-up [here](#).



PAG Chairs Wanted!

NEMA's **Professional Affinity Gatherings** are a key source of best practices, enlightened techniques, and practical wisdom.

PAG coordinators work closely with NEMA Staff on workshops and conference, organize meetups, and help improve the museum field. They're knowledgeable, passionate and a lot of fun. If you are interested in helping to lead a PAG, please contact Meg at meg.winikates@nemanet.org.

Wednesday, November 17

8:15 – 9:15 am

INDEPENDENT MUSEUM PROFESSIONALS AFFINITY GROUP BREAKFAST

Start your day with coffee and colleagues at the IMP PAG annual breakfast meeting. This session is open to all, from seasoned IMPs to those curious about being an IMP.

PAG Chairs: Ernesto Mendoza, Designer/Owner, One By Design, MA; Rebecca Migdal, Museum Consultant, Exhibit Development | Research & Writing | Project Management, MA

9:30 – 3:45 pm

EXHIBIT HALL OPEN

9:30 – 10:30 am

KEYNOTE PRESENTATION

Equity, Governance, and the Future of Culture: A Conversation with Michael J. Bobbitt

Like never before, the cultural sector is addressing the issues of racial and gender equity, power dynamics, and how institutions can become better stewards of social justice. Join us for a conversation with Michael J. Bobbitt, award-winning performing arts leader, cultural critic, and (since February) Executive Director of the Massachusetts Cultural Council, for his vision and insights into how museums and culture can contribute to a better society.

Sponsored by Collector Systems



10:30 – 10:45 am

BREAK

Explore the Exhibit Hall and chat with vendors, attend demos, and discover innovative services for our museum community.

10:45 am – 12:15 pm

CONCURRENT SESSIONS (90 minutes)

Conducting Museum Evaluations with Accessibility in Mind

How can museums gather feedback from people with disabilities so that museum experiences are more universally designed? At this session we'll discuss how rewarding it can be to design museum evaluation plans around people with disabilities. Learn how to craft an evaluation plan, recruit participants, gather and measure the feedback, and implement the information. In this session we will hear from experts as well as participants in the evaluation process.

Facilitator: Aaron Rawley, Volunteer Coordinator, Gore Place Society, MA

Speakers: Jan Crocker, Independent Project Coach, MA; Kamisha Heriveaux, Self-Advocate Content Expert, MA; Leigh Anne Lee, Manager, Inclusive Design and Cultural Projects, Institute for Human Centered Design, MA

Inclusive Philanthropy in Museums: A Unicorn or a Reality?

Today, museums across the country are called upon to create an inclusive, diverse, and equitable environment and experience for staff and visitors alike. These cultural institutions are focused on DEI initiatives in myriad areas such as programming, collections, staff and board recruitment to name a few. But does this priority also include fundraising efforts? Hear from panelists within the arts and culture sector about how they are defining inclusive philanthropy and incorporating it in their work. Then join breakout sessions to discuss this tricky topic in-depth.

Facilitator: Pilar Garro, Director of Development, The House of the Seven Gables Settlement Association, MA (NEMA Board)

Managing the Afterlife of a Collection

What happens after the doors close permanently? For collections management professionals, the job has just begun! But how do we do it "right" and who can we talk to? Hear from representatives of three organizations as they discuss the realities of juggling collections, expectations,

mental wellness, and the idea of legacy, all while navigating the intricacies of institutional closure. Bring your questions and start to build a network of peers with first-hand experience in this largely unexplored topic.

Facilitator: Laura Nemmers, Museum Collections Consultant, FL

Speakers: Stephanie Hebert, Collection Manager, Historic New England, MA; Laura Marion, Collections Coordinator, and Casey Wooster, Collections Assistant, Governor's House Library, University of Florida; Madeline Sweeney, Registrar, Vero Beach Museum of Art, FL

Other Duties as Assigned: The Varied and Various Roles of a New Executive Director

The **NEMA First-Time Executive Director Community of Practice** meets monthly to discuss challenges and share advice. In this session EDCoP members will share some of the lessons they've learned. They'll explore some of the unexpected duties of small museum directors and how new directors can learn to prioritize, delegate, and roll with the punches. Future leaders will learn tips on how to set boundaries and manage expectations for unexpected projects that fall under "other duties as assigned."

Facilitator: Kaleigh Shaughnessy, Executive Director, Whittier Birthplace, MA

Speakers: Eric Peterson, Executive Director, Metropolitan Waterworks Museum, MA; Emma Stratton, Executive Director, American Independence Museum, NH (PAG Chair); Deanna Witte-Walker, Executive Director, Southold Historical Museum, NY

The Art of the Possible: Collaborative Models for Experience Development

Museums aim to create welcoming, safe, and developmentally meaningful environments for all visitors. As daunting as it may be, institutions that serve youth and families are uniquely positioned to empower children and their caregivers to confront and address critical issues of identity, diversity, inclusion, justice, and action in society. This session challenges attendees to rethink our roles, responsibilities, and processes -- and expand our idea of what's possible.

Facilitator: Kate Marciniac, Sr. Director of Exhibits, Boston Children's Museum, MA

Speakers: Silvia Lopez Chavez, Artist & Designer, Chavez Design Studio, MA; Stacey Mann, Independent Interpretive Planner & Learning Strategist, MA; Chanel Thervil, Artist & Educator, MA; Dan Wallis, Principal, Creative, The Square Office, MA

12:15 – 1:30 pm

EXHIBIT HALL

Explore this engaging, online environment that allows attendees to meet with companies about their products and services.

12:30 – 1:15 pm

PAG LUNCHES

Convene with your colleagues over lunch! These Professional Affinity Gatherings are open to all with interest in the field or topic. Specific discussion descriptions will be available closer to the conference.

Today's gatherings include:

Academic Museums & Galleries

PAG Chairs: Deborah W. Disston, Director, McIninch Art Gallery, Southern New Hampshire University; Meredith Fluke, Director, Iris and B. Gerald Cantor Art Gallery, College of the Holy Cross, MA

Exhibitions

PAG Chair: Betsy Loring, Principal, expLoring exhibits & engagement, LLC, MA

LGBTQ+ Museum Staff & Students

Join the LGBTQ+ Museum Staff & Students PAG for an hour of virtual mixing and mingling. PAG Chairs Ali and Sam will share memories from the PAG's first year and welcome participant input for the future of this PAG. Out, closeted, questioning, and allies are encouraged to attend.

PAG Chairs: Sam Dinnie, Intern, Peabody Essex Museum and Interpreter, Paul Revere Memorial Association, MA; Ali Kane, Manager of Corporate and Foundation Relations, Tower Hill Botanic Garden, MA

Library & Archives

How has the pandemic changed our methodologies for bringing our materials to the public?

PAG Chair: Jeffrey Henry, Library Assistant, Reuben Hoar Library, MA

12:30 – 1:15 pm

MUSEUM DIRECTORS' DISCUSSION

This is an opportunity for CEO/Directors to discuss concerns and challenges in an open forum setting. Our facilitator will keep the conversation moving while we share ideas and solutions. Whether you are a seasoned or a first-time museum director, this discussion will be for CEOs of any size museum. *This session is limited to executive directors of museums and similar organizations. Pre-registration required.*

Facilitator: Sue Goganian, Director, Historic Beverly, MA (NEMA Board)

1:30 – 2:30 pm

CONCURRENT SESSIONS

(60 minutes)

Far from Formulaic: Reimagining Your Site with Artists-in-Residence

Contemporary artists can help us reimagine historic sites, objects, narratives, and interpretations in thoughtful ways that broaden audiences. We will discuss best practices, share sample agreements and process documents,

and provide successful examples of Artist-in-Residence programs that bring new life and fresh interpretations to historic sites, both in-person and in the virtual realm.

Facilitator: Rebecca Beit-Aharon, Research Intern, Historic New England, MA

Speakers: Richard Haynes Jr., Artist-in-Residence, Historic New England and Associate Director of Admissions for Diversity, University of New Hampshire; Jennifer Stettler Parsons, Associate Curator, Florence Griswold Museum, CT; Ken Turino, Manager of Community Partnerships and Resource Development, Historic New England, MA

Financial Management Medley

What is contingency planning? When and how do I revise a budget? What are indirect costs? Whether you are launching your museum career or are a seasoned professional or board member looking to brush up your skill set, there are topics that stump many of us from time to time. From budget management to communications to annual reporting, this session is designed to address commonly asked questions that can help individuals at all levels of expertise and organizations of a variety of budget sizes and

Your site and stories... an unforgettable theatrical experience.



Engage

Inspire

Enlighten

Educate

Entertain

Contact **Plays in Place** to explore the possibilities of creating a site-specific play for your museum or historic site.

www.playsinplace.com

structures. Curated from questions raised in past NEMA conferences and with plenty of time set aside for new topics, this session provides an opportunity to fill in the blanks in your financial management vocabulary. Please join us and bring questions!

Facilitator: Rebekah Beaulieu, Director, Florence Griswold Museum, CT (NEMA Board)

Sponsored by Collector Systems

New England's Complicity in the Economy of Enslavement

Join the Atlantic Black Box and NEMA for an open forum Town Hall style session on the stories and history of people who were enslaved in New England and the region's complicity in the economy of enslavement. Where is your museum in this process and where would it like to be in the future? What is the greatest challenge to this work at your site? Come ready to share, listen, and learn during this interactive session.

Facilitators: Meadow Dibble, Founder & Executive Director, Atlantic Black Box, & Visiting Scholar at the Center for the Study of Slavery and Justice at Brown University, ME; Scarlett V. Hoey, Director of Membership and Development, New England Museum Association, MA; Kate McMahon, Ph.D., Museum Specialist, Center for the Study of Global Slavery, Office of Curatorial Affairs, Smithsonian Institution, National Museum of African American History & Culture, D.C.

Podcast Listening Party!

Gather with podcast creators as we listen to podcast excerpts and participate in a guided interactive discussion. Develop a new perspective of the podcast medium. Learn about basic podcast production on a budget. This session is designed for anyone who wants to enjoy podcasts more, and for anyone who wants to jump into podcast production. Join us for the fun experience of listening together!

Facilitator: Emily Robertson, Owner, Studio Robertson, MA

Speakers: Shawn Fitzmaurice, Owner & Talent, Voiceover Nerd Productions, MA; Alli Rico, Content Specialist, City of San Jose Housing Department, CA; Robert Shrimp, PhD, Research and Adult Program Director, Paul Revere House, MA

The Creation of a Virtual Teaching Module: This Land is Home

Join the Community Engagement Specialist at the Haffenreffer Museum of Anthropology at Brown University, Leah Hopkins (Narragansett) as she

shares how the COVID-19 pandemic restrictions paved the way for exploring digital technologies that can be used in PreK-12 classrooms. Leah gives a behind-the-scenes look at the development and technology of a new, free virtual teaching module *This Land is Home: A Seasonal Round in Native New England* that centers Indigenous voices.

Facilitator: Leah Burgin, Manager of Museum Education and Programs, Haffenreffer Museum of Anthropology, Brown University, RI

Speaker: Leah Hopkins (Narragansett), Community Engagement Specialist, Haffenreffer Museum of Anthropology, Brown University, RI

2:30 – 2:45 pm

BREAK

Make time in your schedule to visit the Exhibit Hall to see a showcase of the latest technology and tools.

2:45 – 3:45 pm

CONCURRENT SESSIONS

(60 minutes)

Ask an HR Professional

Set your own agenda by bringing your human resources issues and questions to a panel of HR experts. They will respond to **pre-submitted** and live questions about today's museum workplaces. The panel is designed to provide general advice only and will encourage an open and friendly setting for questions and discussion.

Facilitator: Kyle Pardo, Executive Vice President, AIM HR Solutions, MA

Speakers: Terry Cook, Senior Vice President, and Tom Jones, Vice President, AIM HR Solutions, MA

Bigger Impact: How to Write & Use Impact Statements for Advocacy

Public policy and public opinion are both heavily influenced by key numbers and good storytelling. In this session, we will cover how to create impact statements that convey specific stories of your institution's importance (economic, educational, environmental, and equity-centered), and how to use those statements in communication with your elected officials and the general public.

Facilitators: Raney Bench, Executive Director, Mount Desert Island Historical Society, ME (NEMA Board); Meg Winikates, Director of Engagement, New England Museum Association, MA

(continued on page 18)

Quick Glance

Monday, November 15

9:30 am – 3:45 pm

Exhibit Hall Open

9:30 – 10:30 am

Welcome and Keynote Presentation

- Resilience, Healing, and Museums: A Conversation with Dr. Lisa Wong

10:30 – 10:45 am

Break

10:45 am – 12:15 pm

Concurrent Sessions

- Crowdsourcing Within Reach: Big Impacts for Institutions of all Sizes
Sponsored by Lucidea
- Diversity Recruiting to Make Museum Boards, Leaders and Managers More Inclusive
- K-12 Museum Education in 2021: Best Practices, New Paradigms, and Innovative Solutions
- Power, Trauma, and Integrity: Moral Distress in the Museum Field
- Re/Interpreting Reinterpretation: Challenging Traditional Reinterpretation Processes While Rewriting an Inclusive Narrative

12:15 – 1:30 pm

Exhibit Hall

12:30 – 1:15 pm

Directors and Trustees Lunch

Sponsored by The International Tennis Hall of Fame, Museum Search & Reference, and Tufts University Museum Studies Program

12:30 – 1:15 pm

PAG Lunches

- Curators
- Education
- Historic Sites
- YEP PAG for Emerging Museum Professionals

1:30 – 2:30 pm

Concurrent Sessions

- Challenging Communications
- Museum Mindfulness
- Sports Museum as a Lens for Social Justice
- Think Tank: Museums & Their Climate Change Impact
- Throw Out the Linear Path & Reimagine Your Professional Growth
Sponsored by Public History and Archives Tracks, History Department, University of Massachusetts Boston

2:30 – 2:45 pm

Break

2:45 – 3:45 pm

Concurrent Sessions

- Digitizing Collections: A New Kind of Audience Engagement for Small Museums
Sponsored by Collector Systems, Inc.
- Finding Purpose Amid a Pandemic: The Struggle and Triumph in Re-Imagining Maine Maritime Museum's Education Programs
- Making Exhibits that "Hack the World": Non-Virtual Alternatives to the Gallery
Sponsored by The Arcana Workshop, LLC
- Re-Imagining Workspaces as Supportive & Equitable

2:45 – 5:00 pm

Double Session

- Engaging Facilitation in a COVID World
Sponsored by Collector Systems, Inc.

4:00 – 5:00 pm

Concurrent Sessions

- Collections Conundrums: How Collections Storage Improvement Projects Fueled a Re-Evaluation of the Museum Collection
Sponsored by Tru Vue
- Community Engagement and Co-curation in the Galleries: A Case Study from CT
- Joining a Board: How & Why
- Museum Membership: Town Hall

5:15 – 6:15 pm

Newcomers Reception

Tuesday, November 16

4:00 – 5:30 pm

Borderland: The Life & Times of Blanche Ames Ames Film Screening

Wednesday, November 17

8:15 – 9:15 am

Independent Museum Professionals Affinity Group Breakfast

9:30 am – 3:45 pm

Exhibit Hall Open

9:30 – 10:30 am

Keynote Presentation

- Equity, Governance, and the Future of Culture: A Conversation with Michael J. Bobbitt
Sponsored by Collector Systems

10:30 – 10:45 am

Break

10:45 am – 12:15 pm

Concurrent Sessions

- ▣ Conducting Museum Evaluations with Accessibility in Mind
- ▣ Inclusive Philanthropy in Museums
- ▣ Managing the Afterlife of a Collection
- ▣ Other Duties as Assigned: The Varied and Various Roles of a New Executive Director
- ▣ The Art of the Possible: Collaborative Models for Experience Development

12:15 – 1:30 pm

Exhibit Hall

12:30 – 1:15 pm

The Museum Directors' Discussion

12:30 – 1:15 pm

PAG Lunches

- ▣ Academic Museums & Galleries
- ▣ Exhibitions
- ▣ LGBTQ+ Museum Staff & Students
- ▣ Library & Archives

1:30 – 2:30 pm

Concurrent Sessions

- ▣ Reimagining Your Site with Artists-in-Residence
- ▣ Financial Management Medley
Sponsored by Collector Systems
- ▣ New England's Complicity in the Economy of Enslavement
- ▣ Podcast Listening Party!
- ▣ The Creation of a Virtual Teaching Module: This Land is Home

2:30 – 2:45 pm

Break

2:45 – 3:45 pm

Concurrent Sessions

- ▣ Ask an HR Professional
- ▣ Bigger Impact: How to Write & Use Impact Statements for Advocacy
- ▣ Emergency Planning Tips and Tricks
- ▣ Transformations at Night: The Son Et Lumiere

2:45 – 5:00 pm

Double Session

- ▣ Inclusive Language

3:45 – 4:00 pm

Break

4:00 – 5:00 pm

Concurrent Sessions

- ▣ NEMA: Privilege, Power, and Change
Sponsored by Collector Systems
- ▣ Regeneration Through Collaboration: Forging an Industrial History Network
- ▣ Technology and the Visitor Experience

Thursday, November 18

2:00 – 3:00 pm

GEMM Meet-Up

4:00 – 5:00 pm

Sweetheart Dancers Film Screening

Friday, November 19

9:30 am – 1:15 pm

Exhibit Hall Open

9:30 – 10:30 am

Concurrent Sessions

- ▣ Creating Inclusive Sense of Place Narratives
- ▣ Museums & Unions: Q&A
- ▣ The Emergence and Acceleration of New Virtual Membership Models
- ▣ Torment or Triumph: Planning and Managing Facilities and Infrastructure Projects

10:30 – 10:45 am

Break

10:45 – 11:45 pm

- ▣ Career Conversation with Laura Roberts

10:45 am – 12:15 pm

Concurrent Sessions

- ▣ Challenges, Opportunities, and Growth: How to Build an Actionable Strategic Plan Despite a Global Pandemic and Resistance to Change
- ▣ Making Space: Museums Encouraging Community
- ▣ Talk Dirty to Me: Cleaning Furniture
- ▣ The Future of Museum Education: Inside/Out of Museums

12:30 – 1:15 pm

Annual Meeting & Awards

1:30 – 2:30 pm

Concurrent Sessions

- ▣ Disaster Planning for Extended Closures
- ▣ Impactful Collections: Making Historic Data Relevant to our Most Pressing Issues
- ▣ Swinging Open the Doors on Virtual Tours in Historic House Museums
- ▣ The Coastal Maine Geopark: Community, College and Museum Collaboration

**CONNECT.
LEARN.
JOIN.**

www.nemanet.org/membership

nema

(continued from page 15)

Emergency Planning Tips and Tricks

An emergency plan is one of the AAM's five core documents for museums, however the idea of creating one can be overwhelming if you've never written one before. Join us for an informative hour of tips that will get you started on the process. You'll also hear about an exciting class NEMA will provide in 2022 where you'll work in a structured environment to create your institution's emergency plan.

Facilitator: Tiffani Emig, Programs Director & Administrative Manager, Foundation for Advancement in Conservation, DC

Speaker: Rebecca Elder, Cultural Heritage Preservation Consultant, Rebecca Elder Cultural Heritage Preservation, TX

Transformations at Night: The Son Et Lumiere

The Son Et Lumiere, or, Sound-and-Light Show, transforms a historic site at night through lighting, narration, and music. It tells the story of the site and provides guests with a unique immersive experience. Join the team from Clerestory Light

and The Trustees to learn how Son Et Lumiere shows can be developed through collaboration.

Speakers: Chris Bocchiaro, Creative Director, and Robin Donovan Bocchiaro, Historian, Clerestory Light, CT; Trina Schell, Public Events and Community Outreach Manager, The Trustees / Crane Estate, MA

2:45 – 5:00 pm DOUBLE SESSION (120 minutes)

Inclusive Language

We all know that some word choices are more welcoming than others, whether you're writing artifact labels, exhibition catalogs, or social media posts, but it's not always a simple find-and-replace task. The language we use as institutions and individuals shapes how we and our audiences make meaning, understand museum content, and think about marginalized groups. Editor and inclusive language consultant Alex Kapitan will help us deepen our understanding of what makes language choices inclusive or exclusive and how to approach tough decisions around communication. The session, a repeat of a 2021 NEMA workshop, will cover material geared toward people who are just starting to think about these issues and people who have been grappling with them for some time.

Facilitator: Alex Kapitan, Radical Copyeditor, MA



Documentary
Educational Resources

The best in classic and contemporary ethnographic film and media

We help plan virtual or in-person screenings and provide footage for exhibitions. Discounts available for community museums.

Contact us to inquire: info@der.org

101 Water Street 5A, Watertown MA 02472 (617) 926-0491 der.org

3:45 – 4:00 pm BREAK

Great time to visit the Exhibit Hall and stretch your legs.

4:00 – 5:00 pm CONCURRENT SESSIONS (60 minutes)

NEMA: Privilege, Power, and Change

The legacy of colonialism and structural racism runs through NEMA and many of our institutions. In order to change the systems that perpetuate inequality, and to be part of a just and equitable world, it is necessary to acknowledge and challenge the implicit and explicit systems of racism, white supremacy, privilege, and power. That is why, in 2021, the NEMA Board and Staff partnered with Arts Connect International to center a strategic planning effort around DEAIJ work. This work has included examining ourselves, our organizational power structures,

and the NEMA mission/vision/value statements. We continue on this journey together and invite you to join us for a presentation on the evolution of this work, what it means for the field, and to help us with your own insights for the NEMA team.

Speakers: Marian Taylor Brown, Co-Director of Abundance, Arts Connect International, MA; and NEMA Staff and Board Members

Sponsored by Collector Systems

Regeneration Through Collaboration: Forging an Industrial History Network

Small history museums rarely collaborate. And when they do, it is often to support a temporary exhibition or other short-term project. In 2020, three Massachusetts museums came together behind a much more ambitious goal: to promote an entire regional community of thematically-related organizations by creating a comprehensive web-resource to inspire and encourage public visitation, engagement and learning. This session will provide insights into the benefits and challenges of long-term collaborative projects.

Speakers: John Mayer, Executive Director, Amesbury Carriage Museum, MA; Robert Perry, Executive Director, Charles River Museum of Industry and Innovation, MA; Eric Peterson, Executive Director, Metropolitan Waterworks Museum, MA

Technology and the Visitor Experience

Incorporating technology or multi-media experiences into your museum helps engage visitors while enhancing the guest experience. Knowing what forms of technology are best for your museum is crucial in terms of connecting with your visitors and fulfilling your mission. Learn about the different options for your museum. How do you choose the right one? Which best connects with a certain audience demographic? How do you determine which best complements the overall exhibit goals?

Facilitator: Doug Stark, Museum Director, International Tennis Hall of Fame, RI

Speakers: Terry Healy, Principal, HealyKohler Design, DC; Greg Sprick, Technical Director, Richard Lewis Media Group, MA

Thursday, November 18

2:00 – 3:00 pm

GEMM MEET-UP

What does gender equity in the museum field mean in 2021? Come be part of a conversation with GEMM Steering Committee members Marieke Van Damme, Ashanti Davis, and Scarlett Hoey as we have an informal conversation about gender equity, the pandemic, and the museum field. Share your story and experience with others. Strategize on how we can increase equity and inclusivity in museums. Active participation is encouraged and we will be utilizing jamboards for some big picture brainstorming. Sign-up on the registration form or you can sign-up [here](#).

4:00 – 5:00 pm

SWEETHEART DANCERS FILM SCREENING

Documentary Educational Resources invites you to the virtual screening of our newly released film, *Sweetheart Dancers* (13 minutes, 2019). Indigenous dancers Sean and Adrian challenge the rulebook of San Manuel's Native American Sweetheart Special as they attempt to compete in the annual couple's competition. The film will be available for conference attendees and members during the NEMA 2021 Conference. Q&A with the film's director and cast will be hosted online. Sign-up on the registration form or you can sign-up [here](#).



Protect Your Cultural Property



Installing security at cultural properties requires a balance of architecture and aesthetics with necessary protection. Not all integrators have that capability. Nationwide Security Corporation specializes in installing the following systems for the special needs of cultural properties:

- Electronic Access Control Systems
- Video Management Systems
- Intrusion Systems
- Intercom Systems
- Integrated Electronic Systems
- RFID Asset Tag Systems
- Turnstiles, Revolving Doors and Portals
- Fire Protection Systems
- UL Compliant Installations and Systems
- UL Central Station Monitoring

We are an independently owned and operated security provider with over 35 years in business serving the cultural properties market nationally.

Contact us for assistance today



NSC
NATIONWIDE SECURITY CORPORATION

65 North Branford Road, Suite 8
Branford, CT 06405

Brian Gouin, Senior Security Consultant
briang@nationwidesecuritycorp.com

Office: 203-785-0300 x4115

www.nationwidesecuritycorp.com

CT LIC #L-5 105668

Friday, November 19

9:30 am – 1:15 pm

EXHIBIT HALL OPEN

Make time in your schedule to visit the Exhibit Hall to see a showcase of the latest technology and tools.

9:30 – 10:30 am

CONCURRENT SESSIONS

(60 minutes)

Creating Inclusive Sense of Place Narratives

You can link museum stories to a sense of place (wherever you are) through narratives that include the wider and deeper stories, and invite visitors to find their personal connections to your resources. Hear case studies of community engagement programs that have helped visitors find links from the past to the present to their lives beyond your doors. Gain ideas for engaging and effective techniques that appeal to different learning styles. Brainstorm and network with peers during this hands-on workshop to find and create sense of place stories.

Speaker: Erica Wheeler, Consultant/Interpretive Trainer, Sense of Place Consulting, MA

Museums & Unions: Q&A

Have you ever wondered about how unions work in a museum? Join your museum colleagues and their union representatives for an ask us anything style Q&A session. This session will not be recorded and any questions submitted ahead of time will be anonymous. You can submit questions online [here](#).

Speakers: Maro Elliott, Manager of Institutional Giving, MASS MoCA; Chelsea Farrell, Organizer, Local 2110 UAW, MA; Dan Morse, Membership Development Coordinator- AFSCME Council 93, MA; Rachel Quimby, Public Programs Coordinator, EcoTarium, MA

The Emergence and Acceleration of New Virtual Membership Models

In the era of COVID-19, we've seen a surge of new membership models, and particularly "virtual memberships." Virtual memberships have taken a variety of different forms, including new digital benefits, virtual member events, and

even fully-fledged virtual membership levels. In light of this new "virtual membership" trend, this session will explore common questions, benefits, and challenges surrounding virtual memberships, featuring the stories of several membership leaders who have successfully launched virtual membership initiatives themselves.

Facilitator: Dan Sullivan, Head of Growth & Partnerships, Cuseum, MA

Speaker: Libby Daly, Associate Director of Membership, Mystic Seaport Museum, CT

Torment or Triumph: Planning and Managing Facilities and Infrastructure Projects

Is a failing roof, dying HVAC, mouse-chewed wiring, or inadequate square footage barging onto your "must do" list? Should you repair or replace? Do you call your general contractor or go out to bid? If you do not have construction project management experience these can be difficult decisions to make, and mistakes are expensive. This session will focus on helping non-facilities staff make important decisions during the planning and execution of the construction process.

Facilitator: Betsy Loring, Principal, expLoring exhibits & engagement, LLC, MA (PAG Chair)

Speakers: Greg Colling, Founding Partner, Merrimack Design Architects, LLC, VT; Shana Hawrylchak, Executive Director, SEE Science Center, NH

10:45 – 11:45 am

CAREER CONVERSATION WITH LAURA ROBERTS

Join Laura B. Roberts of Roberts Consulting for a look at her career and a discussion of working in the museum field. Laura's museum experience includes service to the National Heritage Museum, USS Constitution Museum, and Rhode Island Historical Society as director of education, and executive director of the Boston Center for Adult Education as well as NEMA. As the principal of Roberts Consulting, Laura has worked with more than 180 museums and cultural organizations around the country, and is a founding member of The Museum Group. She teaches at Harvard's Museum Studies program and Bank Street College.

10:30 – 10:45 am

BREAK

Explore the Exhibit Hall and chat with vendors, attend demos, and discover innovative services for our museum community.

10:45 am – 12:15 pm

CONCURRENT SESSIONS

(90 minutes)

Challenges, Opportunities, and Growth: How to Build an Actionable Strategic Plan Despite a Global Pandemic and Resistance to Change

Launching a strategic plan at your museum or institution can be a very exciting time. It means you are ready for the next phase of growth and self-assessment! But strategic planning can also mean challenges and obstacles before and during the process. Let's take a deep dive into best practices, growth, strategic planning, and universal challenges may affect outcomes and progress. This session will kick-start your strategic planning process and ultimately your long-term sustainability.

Facilitator: Rebekah Beaulieu, Director, Florence Griswold Museum, CT (NEMA Board)

Speakers: Jessica Browning, Executive Vice President and Principal, and Jim Bush, President and Principal, The Winkler Group, SC; Matt Strekel, Director of Development, Florence Griswold Museum, MA

Making Space: Museums Encouraging Community

Museums take up a lot of space. From historic homes to granite facades, how are museums using their power and influence to support underrepresented communities and foster dialogue about pressing issues? Learn from museums who are making space for previously incarcerated folks, the LGBTQ+ community, and BIPOC folks to transform into spaces for social change.

Speakers: Sam Dinnie, Intern, Peabody Essex Museum and Interpreter, Paul Revere Memorial Association, MA (PAG Chair); Ali Kane, Manager of Corporate and Foundation Relations, Tower Hill Botanic Garden, MA (PAG Chair)

Talk Dirty to Me: Cleaning Furniture

Are you confused about how to care for furniture and wooden artifacts in your care? Are you afraid to do anything for fear of removing an "original finish"? Tune into this Talk Dirty to Me session for a live demonstration of conservation techniques with two veteran conservators. Learn how to assess cleanliness, gently remove soils, and protect your furniture for the future.

Speakers: Camille Breeze, Director/Chief Conservator, Museum Textile Services, MA (PAG Chair); Barrett Keating, Conservator, Barrett M. Keating Conservators, MA (PAG Chair)

The Future of Museum Education: Inside/Out of Museums

In this session we will continue conversations from the 2015 and 2018 NEMA Conferences on the future of museum education. In the wake of the COVID pandemic, which affected museum education disproportionately, 2021 seems like an important moment to convene a third "unsession" on the future of the profession. We will look at how the role of museum educators has changed due to COVID-19. What have been the positive changes and new experiences gained? How have colleagues thought creatively about their skill sets? What does the future of the profession look like? Join us to discuss what's next for museum educators.

Facilitator: Elisabeth Nevins, Principal, Seed Education Consulting, MA

Speakers: Brooke DiGiovanni Evans, Director of Visual Arts Education, Brigham & Women's Hospital, MA (NEMA Board); Paul Fenton, Education Coordinator, Gore Place, MA; Michelle Moon, Principal, Saltworks Interpretive Services, NY; Amanda Goodheart Parks, Director of Education, New England Air Museum, CT (PAG Chair)

12:30 – 1:15 pm

ANNUAL MEETING & AWARDS

This is your chance to celebrate your association and the people in it. We'll start out with the annual NEMA Excellence Awards, presented to colleagues who have gone "above and beyond." Highlights will also include the NEMA Lifetime Achievement Award honoring Laura B. Roberts, plus a brief "state of the association" presentation from NEMA Executive Director Dan Yaeger. The business part of the meeting will include voting on this year's slate of NEMA officers and new members, plus bylaw updates. NEMA members come exercise your vote!

LIFETIME ACHIEVEMENT AWARD

We are pleased and delighted to present the 2021 NEMA Lifetime Achievement Award to Laura B. Roberts. Throughout her career, Laura has exemplified a deep and lasting commitment to NEMA: as the organization's executive director, board member, scholarship supporter, adviser, and member of the NEMA 911 rapid response team. She was one of the organizers of the IMP PAG and now serves on the steering committee of the AAM IMP professional network. As the principal of Roberts Consulting, Laura has worked with more than 180 museums and cultural organizations around the country helping them build compelling strategic plans and strong organizations. Prior to her time at NEMA, she was director of education at the National Heritage Museum, USS Constitution Museum, and Rhode Island Historical Society, as well as executive director of the Boston Center for Adult Education. Laura is a founding member of The Museum Group, a national consortium of museum consultants, volunteers her time on several cultural boards, and is adjunct faculty at the Harvard University graduate program in Museum Studies and Bank Street College of Education's Leadership in Museum Education program.



Impactful Collections: Making Historic Data Relevant to our Most Pressing Issues

Our collections contain vital information that can help us better understand the events and important issues taking place around us. Without a thorough understanding of how things were we cannot measure change over time, or plan for the future we want. This session will share ideas for how to pull data from historic collections, bring diverse partners to the table, and convene conversations about how the past can inspire us to envision a better future.

Facilitator: Raney Bench, Executive Director, Mount Desert Island Historical Society, ME (NEMA Board)

Swinging Open the Doors on Virtual Tours in Historic House Museums

Case studies on three virtual historic house museum tours will be used for this session in order to review how to develop a virtual tour, how to include access options, and how to maintain a virtual tour all while staying within budget. This session will highlight the advantages and disadvantages of implementing virtual tours and what happens when you virtually open the doors to your historic house museums and connect with a larger audience.

Facilitator: Abby Battis, Associate Director for Collections, Historic Beverly, MA (PAG Chair)

Speakers: Michael H. Maler, Regional Site Manager, Metro Boston, Historic New England, MA; Iliana Morton, Executive Director, Camron-Stanford House, CA

1:30 – 2:30 pm CONCURRENT SESSIONS (60 minutes)

Disaster Planning for Extended Closures

Closing a cultural heritage facility may be part of an institution's seasonal schedule or caused by a disaster or stay-at-home order. Regardless of the cause, extended closures have serious implications for the preservation of an organization's collections. This session will introduce attendees to collections concerns that arise when a building is not accessed regularly and recommends practical solutions for adapting an organization's disaster plan and implementing practical mitigation and monitoring strategies in-house.

Speakers: Stephanie Garafolo, Preservation Specialist, and Alison Fulmer, Preservation Specialist, Northeast Document Conservation Center, MA

The Coastal Maine Geopark: Community, College and Museum Collaboration

The UNESCO-supported Geopark concept is influential in Canada, although less familiar in the US. The Coastal Maine Geopark began as a student project at College of the Atlantic and has since gathered support from museums, parks, and communities along the Maine coast. Speakers will introduce the Coastal Maine Geopark, the Geopark concept, and address issues of contextualization vs. decontextualization, community engagement in interpretation, sustainability, and collaboration between parks, museums, and institutions of higher education.

Facilitator: Alexander Goldowsky, Visiting Faculty College of the Atlantic, Principal, Interact LLC, MA

Speakers: Dru Colbert, Faculty, Arts & Design, and Sarah Hall, Anne T. & Robert M. Bass Chair in Earth Systems & GeoSciences, Carrie Graham, George B. Dorr Museum Director, and Sahra Gibson, Student, College of the Atlantic, ME

Conference Information



For conference updates and the latest news, follow us on Twitter



(@nemanet, #nema2021) or Facebook and Instagram.



ADA Accommodations

While registering, you will be prompted to indicate any accessibility needs. We will follow up with you prior to the meeting to provide resources or obtain more information. If you have additional accessibility needs, please contact Meg Winikates at meg.winikates@nemanet.org. Please make requests as soon as possible to allow us time to provide the requested service.

Online Registration

Just [click here](#) to register. Or, if you prefer, complete the form on the next page and return it to us by mail no later than November 5 (October 22 if you want the Early Bird discount).

Speakers

NEMA appreciates its colleagues who participate as panelists and speakers. If you plan to attend the conference beyond the session in which you're participating, we offer a significant discount on registration. Only attending your session? We ask that you still register for the conference. Just select the "attending my session only" option and the registration is free.

Group Rate

NEMA member museums can send 5 or more employees and save 25% off the full conference member rate! Contact the NEMA office at conference@nemanet.org to register. Please note that the discount only applies to the full conference member rate.

Registration Policies

You may transfer your registration to another person at any time prior to conference. Please email the NEMA office with the name of your replacement. One-day registrations may not be split between days.

Cancellation Policy

Please see the NEMA website for full details.

For More Information

Please check the NEMA website for more information about the conference, including access to the online platform. We will also be happy to answer your questions by phone 781-641-0013 or email conference@nemanet.org.



Museum Learning Hub

Free Self-Paced Training Resources for Small Museums

Museum-hub.org



Scholarships & Fellowships

Thanks to the generosity of sponsors, several scholarships and fellowships are available to help make the NEMA conference more affordable.

Applications must be digitally submitted by midnight on October 22, 2021.

The application process is simple:

- Complete a Scholarship and Fellowship application form online.
- A one paragraph response on how you will have an impact on the museum community of the future and how NEMA plays a role in your career trajectory. The NEMA Fellowship applicants must include a short paragraph on possible topics of interest that would contribute to NEMA's journal, *New England Museums Now*.

For complete information on the application process, visit nemanet.org/scholarships.

General Scholarship

Many thanks to our Scholarship Underwriting Partners and Sponsors.

NEMA Fellowship Award

Given to a museum professional or student in the field to encourage professional development and thought leadership. The NEMA Fellow is awarded complimentary full conference registration and a stipend (\$200). The NEMA Fellow will contribute thought leadership by writing at least 3 articles on museum-related themes for NEMA publications during the year. The NEMA Fellow is expected to produce these materials based on their exploration of museum issues and conference experience. NEMA Fellowship applicants must include a short paragraph on possible topics of interest that would contribute to NEMA's journal, *New England Museums Now*.

NEMA Equity Scholarship

Established to make the conference financially accessible for students and museum professionals whose racial, ethnic, sexual orientation and/or gender identity has been historically underrepresented in the museum field. This scholarship provides full conference registration and a stipend (\$100). Awardees may choose to join a cohort of their peers and participate in additional ongoing programming. These funds are made possible by the generosity of NEMA Annual Appeal donors.

NEMA Board Equity Scholarship

A NEMA board funded scholarship to make the conference financially accessible for 5 professionals and/or students whose racial, ethnic, sexual orientation, and/or gender identity has been historically underrepresented in the museum field. This scholarship is awarded complimentary membership, full conference registration, and a stipend (\$100). Awardees may choose to join a cohort of their peers and participate in additional ongoing programming.

The Cynthia Robinson Scholarships

This is awarded to support four conference registrations. Priority for this scholarship will be given to current students or recent graduates (within five years) of the Tufts Museum Studies Program. Support provided by Cynthia Robinson.

The Katherine Burton Jones Scholarships

This is awarded to support four conference registrations. Priority for this scholarship will be given to current students or alumni of the Harvard University Extension School, Museum Studies. Support provided by The International Tennis Hall of Fame.

The Laura B. Roberts Scholarships

This is awarded to support four conference registrations. Priority for this scholarship will be given to graduates of the Harvard Museum Studies, Tufts Certificate, Bank Street Museum Leadership, and Cooperstown programs. This scholarship has been provided with support from Laura B. Roberts.

Thanks for making the conference possible!

A special thank you to all of our speakers, NEMA Board, PAG Chairs, Sponsors, Exhibitors, and our volunteers.

Scholarship Sponsors

Connecticut Humanities and Connecticut Office of the Arts and State Historic Preservation Office; History Cambridge, Cynthia Robinson; Laura B. Roberts; Mass Humanities; Massachusetts Cultural Council; Museum Insights; Museum Textile Services; Rhode Island Council for the Humanities; The International Tennis Hall of Fame; The NEMA Board; and the Vermont Humanities Council.

Session Reading Team

Sue Gogonian, Brooke DiGiovanni Evans, and Arthurina Fears.

Registration Form

Each registrant must be listed on a separate form. Mail or email with your payment by October 22, 2021 for the Early-Bird Rate or by November 5 for the Standard Rate to: NEMA 2021 Annual Conference / 22 Mill Street, Suite 409 / Arlington, MA 02476 / conference@nemanet.org

Register online today!
nemanet.org/register21

Registrant Information

First Name _____ MI ____ Last Name _____

Title _____

Institution _____

Mailing Address _____

City/State/Zip _____

Contact Phone _____

This will only be used if NEMA has questions regarding your registration and is unable to reach you by email.

Email _____

This email address will be used to access the conference platform. Confirmations will also be sent to this address.

Membership Information

If registering at member rates, please check one:

- Individual Institutional (Includes Institutional Affiliate Members) Academic Affiliate Member Business
 New NEMA Member (Fill out information below.) Member of AMM, MAAM, MPMA, SEMC, WMA, CLHO, or MAM

Join NEMA Now!

- \$50 Individual Member** **\$40 Reduced** (Full-time Student, Job hunting, Volunteer, or Retiree)

For institutional and business membership, please visit nemanet.org for membership information.

Conference Program Registration

Please circle the appropriate fee:

	Early-Bird by Oct. 22	Standard Rate Oct. 24 - Nov 5
Full Meeting		
Member Rate	\$140	\$165
Non-member	\$175	\$200
Speaker	\$50	\$50
Student	\$25	\$25
Reduced Rate	\$25	\$25

One Day

Member Rate \$50 \$60
Day: _____

If Registering as a Speaker:

Session title: _____

- I will only be attending my session.
(No registration fee.)

Special Event Registration

Specific sessions are listed if registration is required.

- Newcomers Reception (Monday)
 Directors and Trustees Lunch Program (Monday)
 Film Screening - Borderland (Tuesday)
 Directors' Lunch (Wednesday)
 GEMM Meet-Up (Thursday)
 Film Screening - Sweetheart Dancers (Thursday)

Attendee Information

- This is my first time attending a NEMA conference.
 Sessions will be hosted on Zoom through the Whova platform. Do you have any Communication Accommodations we might provide to support your attendance at the conference?

Payment

Registration Fee \$ _____

Membership Fee \$ _____

NEMA Annual Appeal Donation \$ _____

Total \$ _____

Method of Payment

- Check is enclosed (payable to NEMA); mail only.
 Charge my credit card for the total amount above.
 Visa MasterCard American Express

Card Number _____

Expiration Date _____ CVC/CSC _____

Cardholder's Signature _____

Print Name as it Appears on Card _____