



2021 NEMA VIRTUAL CONFERENCE

NOVEMBER 15, 17, and 19, 2021

nema *NEW ENGLAND
MUSEUM ASSOCIATION*

Dear NEMA Friend:

Thank you so much for attending the 103rd NEMA Conference. Of course we realize that a virtual conference can never fully replicate the in-person experience, but I think you'll find enough high-quality sessions, discussions, and energy to boost your spirit and intellect in the days ahead.

I am so grateful for all of those committed to our museum field who helped make the conference possible, including and especially our colleagues who want to share their stories and expertise in 50+ sessions. And keynote presenters Dr. Lisa Wong and Michael Bobbitt will provide insights into today's most pressing topics: our Covid experience, resilience, social justice, and its intersectionality with many other issues.

I'm especially thankful for our exhibitors and sponsors, including many of New England's state arts and humanities councils, who have stepped up their support of the NEMA conference. Their funding has allowed us to offer a range of registration options that makes the conference accessible to everyone regardless of their financial circumstances.

Thank you, too, for sticking with us and attending this year's conference. I hope you have a great experience and I look forward to seeing you virtually over the next few days and in person sometime soon!

Dan Yaeger
Executive Director



A Special Thank You to our Sponsors!



Any views, findings, conclusions, or recommendations expressed during this conference, do not necessarily represent those of the National Endowment for the Humanities.

How to Make the Most of NEMA 2021!

Conference Platform

Our conference platform & app, powered by Whova, is your key to the conference this year. The entire conference is at your fingertips with easy access on both your desktop or mobile device. You'll have it all: access to session information, exhibit hall, evaluations, social media, and virtual meet-ups. Download the Whova app from the App Store or Google Play. Open Whova, then create a login using the email you used to register for the conference. Once logged in on Whova you will have access to the conference based on your ticket type (full day, session only, single day). Use the [Whova Attendee User Guide](#) to learn more about the platform.

Concurrent Sessions

Sessions will be run concurrently and can be added to your agenda on the platform. Recordings will be available the week after the conference and live for 3-months. Please note: some sessions will not be recorded for privacy reasons.

Events on Tuesday and Thursday are open to all and accessible through the conference platform.

Exploring the Exhibit Hall and Sponsor Areas

Learn from leaders in the museum field in this one-stop educational venue for all attendees. Chat with Exhibitors and Sponsors and join them for a showcase demo during breaks and throughout conference. Support the businesses that celebrate and support our field. And, don't forget to enter Exhibitor raffles to win incredible prizes!

Networking Events

Go to the Community Board on the conference platform, and find the board for Meet-ups and Virtual Meets. Find the meet-up you are interested in, join directly, or tap into it to see more details, and then tap "Join"

You can also suggest a new meet-up by tapping "Suggest a Meet", and inputting the details. If you know someone will be interested, don't forget to invite them as well. Add your preferred meeting link (Zoom, Google Meet, etc.).

Code of Conduct

NEMA has a Code of Conduct for all of its events, whether in person or online. All attendees agree to abide by the code in order for us to work together toward inclusion, safety, respect, and professionalism. Please read the code at nemanet.org/code.

Session Updates

New Sessions

- Build (Your Community) Back Better: Using museum practices for community and urban planning: Monday, November 15 at 1:30 pm
- Coffee Meet and Greet with the NEMA Board: Tuesday, November 16 at 10:00 am
- Short'n'Sweet Meet: Wednesday, November 17 at 5:15 pm

Session Submission Forms

Questions for the following sessions can be submitted ahead of time will be anonymous or during the session.

- [Ask an HR Professional](#), Wednesday, November 16
- [Museums & Unions: Q&A](#), Friday, November 19

Social Media

Join the conversation on social media with [#NEMA2021](#) and follow [@nemanet](#) on Twitter and [@nema_conference](#) on Instagram. Share the fun of conference and tell the world why you love museums! You can also share with other attendees using the community board. You can upload your work-from-home or work-from-museum conference photos to share with fellow attendees as well.

Demonstration Events

Tune in to the Virtual Exhibit Hall and Sponsor Pages for demonstrations and talks. A full schedule of events will be available on the NEMA website and in the conference platform. Learn about innovative products and how-to tips on mastering the latest museum field trends.

NEMA Annual Meeting

Friday, 12:30 pm - 1:15 pm

Join us as we present the annual NEMA Excellence Awards and the NEMA Lifetime Achievement Award honoring Laura B. Roberts. There will also be a brief "state of the association" presentation from NEMA Executive Director Dan Yaeger. Members can vote on the new board slate and bylaw updates.

Make Plans for Springfield in 2022!

November 2-4, 2022: Save the date for the 2022 Annual Conference next in Springfield, MA.

Questions?

The Whova conference platform Ask the Organizers Anything section under the Community tab or email conference@nemanet.org. Please note that the NEMA staff is working remotely and the fastest way to reach us is by Whova or email.

Monday, November 15

9:30 am – 3:45 pm
EXHIBIT HALL OPEN

9:30 – 10:30 am
WELCOME AND KEYNOTE
PRESENTATION

**Resilience, Healing,
and Museums: A
Conversation with
Dr. Lisa Wong**

Now more than ever the museum field needs resilience and healing – for ourselves and our audiences. Join us as we kick off the conference with

Dr. Lisa Wong from the Arts and Humanities Initiative at Harvard Medical School. Dr. Wong is a pediatrician, musician, and author dedicated to the healing arts of music and medicine, with deep insights into how cultural workers can leverage their personal and institutional assets to improve well-being. She will be in conversation with NEMA board member Brooke DiGiovanni Evans, Director of Visual Arts Education at Brigham & Women's Hospital.



10:30 – 10:45 am
BREAK

Explore the Exhibit Hall and chat with vendors, attend demos, and discover innovative services for our museum community.

10:30 – 10:45 am
DEMONSTRATION STATION

Julie Arrison-Bishop, Founder, Museumtastic, MA

10:45 am – 12:15 pm
CONCURRENT SESSIONS
(90 minutes)

**Crowdsourcing Within Reach: Big Impacts
for Institutions of all Sizes**

The best-known crowdsourced transcription projects are run by large, well-staffed institutions and can make such projects seem out of reach to smaller sites. Discover how Mount Auburn Cemetery, Historic New England, and the Center for Astrophysics | Harvard & Smithsonian started and now manage their crowdsourced transcription projects. Learn about the unexpected benefits of crowdsourced projects including breaking down barriers to collections access, diversifying virtual volunteers, expanding your audience, and deepening understanding of your collections.

Facilitator: Meg Winslow, Curator of Historical Collections & Archives, Mount Auburn Cemetery, MA

Speakers: Thom Burns, Curatorial Consultant, and Elizabeth Casner, Collection Management Consultant, Mount Auburn Cemetery, MA; Nico Carver, Librarian for Collaborative Programs, and Katie Frey, Assistant Head Librarian, Digital Technologies, the Center for Astrophysics | Harvard & Smithsonian; Lorna Condon, Senior Curator of Library and Archives, and Susan Jarvis, Volunteer, Historic New England, MA

Sponsored by Lucidea

**Diversity Recruiting to Make Museum
Boards, Leaders and Managers More
Inclusive**

Museums want to diversify their leadership and staffs, but in New England, outside certain cities, those recruiting often feel their networks lack diversity, that they don't have inclusive resources to draw upon, or they don't have enough contacts with BIPOCs to recruit successfully. The session will feature experts to share methods, resources and contacts to help boards, directors and managers reach out/network to recruit inclusively; also advising on preparing your museum to onboard BIPOC colleagues.

Facilitator: Ida Tomlin, Senior Search Consultant, Museum Search & Reference, NH

Speakers: Christian Greer, President and CEO, Michigan Science Center, Marilyn Hoffman,

Principal, Museum Search & Reference, NH; Katherine McNamee, Director, Human Resources, American Alliance of Museums, VA; Kyera Singleton, Executive Director, Royall House and Slave Quarters, MA

Sponsored by Collector Systems, Inc.

K-12 Museum Education in 2021: Best Practices, New Paradigms, and Innovative Solutions

Creating Meaningful Museum Experiences for K-12 Audiences: How to Connect with Teachers and Engage Students (Rowman & Littlefield/AAM, 2021) is the first book in more than a decade to comprehensively consider K-12 programming in museums. Join four of the book's contributors in a roundtable session, chaired by editor Tara Young, to hear about several of the trends, best practices, and creative ideas that serve as an organizing framework for the book, and then engage in conversation in small facilitated groups.

Facilitator: Tara Young, Independent Museum Professional, Tara Young Consulting, MA

Speakers: Tara Burns, Specialist, Family & K-12 Audiences, Hammer Museum, CA; Melissa Higgins, Senior Director, STEAM, Boston Children's Museum, MA; Deanna Nebel, Education Instructor, Rock n' Roll Hall of Fame, OH; Jason Pallas, Manager of Community Engagement and Arts Learning, Smart Museum of Art, University of Chicago, IL

Power, Trauma, and Integrity: Moral Distress in the Museum Field

The pandemic has cast in sharp relief the many ways in which museum work can be difficult if not traumatic. The layoffs, economic uncertainty, and social justice reckoning our field has experienced over the past 18 months have added to pre-existing conditions of pay inequity, toxic workplace cultures, governance dysfunction, sexual harassment, and privileged power dynamics that many museum workers encounter daily. In this think tank session, we'll explore these issues together, using your real-world experiences, through the lens of moral distress, the suffering that occurs when one participates in systems that conflict with one's values and sense of integrity. Our goal will be to identify tools and strategies for museum professionals to use to manage their emotional well-being while contributing to the health of their workplace – and the field itself.

Speakers: Raney Bench, Executive Director, Mount Desert Island Historical Society, ME (NEMA Board); Dan Yaeger, Executive Director, New England Museum Association, MA

Re/Interpreting Reinterpretation: Challenging Traditional Reinterpretation Processes While Rewriting an Inclusive Narrative

Learn how four small museums are working to reframe narratives and create new interpretive structures in order to acknowledge stories that have been hidden or ignored, and to work towards justice and equity. The museums are using community networks, social action organizations, and the International Coalition of Sites of Conscience to embrace systems of change and to encourage audience action. Panelists will share ways attendees can jumpstart the process at their sites.

Facilitator: Joan DiMartino, Museum Curator & Site Superintendent, Prudence Crandall Museum / CT State Historic Preservation Office

Speakers: Morgan Bengel, Museum Curator & Site Administrator, Old New-Gate Prison and Copper Mine, CT; Andrew Rowand, Museum Assistant, Eric Sloane Museum, CT; Elizabeth Shapiro, Director of Arts, Preservation, and Museums, Operations, Museums and Historic Preservation, State Historic Preservation Office, Dept. of Economic and Community Development, State of CT

12:15 – 12:30 pm

DEMONSTRATION STATION

Emily Roberstson, Owner and Founder, Studio Robertson, MA

12:30 – 12:45 pm

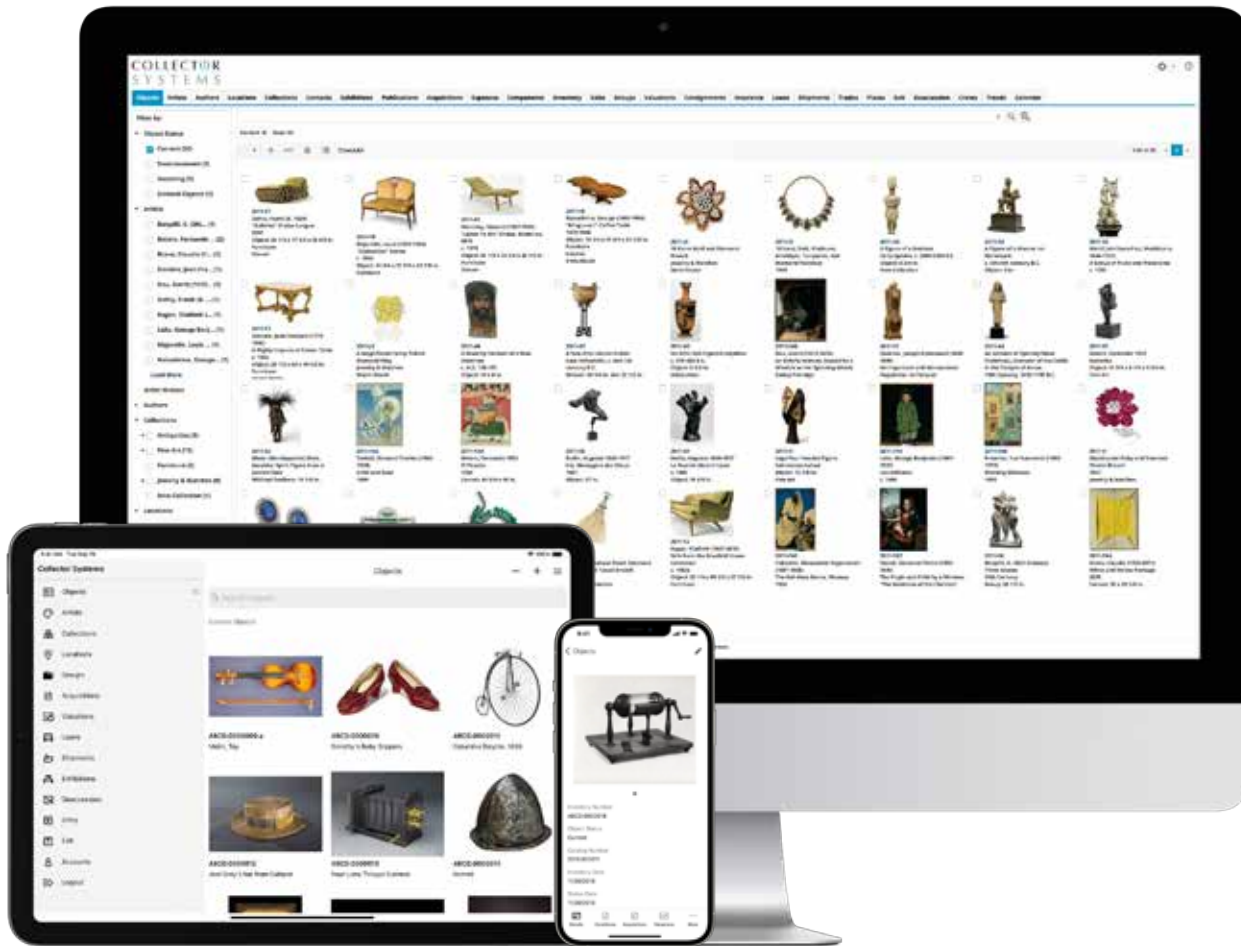
DEMONSTRATION STATION

Brian Gouin, Senior Security Consultant, Nationwide Security Corporation, CT

12:15 – 1:30 pm

EXHIBIT HALL

Learn from leaders in the museum field in this one-stop educational venue open to all attendees. Say "hello" and ask questions of our incredible vendors by using the booth chat and join in on a booth demonstration. Support our vendors who support NEMA.



Powerful. Intuitive. Secure. This CMS? Best there is. Stress level? None.

- Secure cloud-based solution
- iOS and Android apps
- New public Gallery
- New API
- New filtering capabilities
- New smart full text search
- Customized reports
- Mobile condition reporting
- Data migration services
- Superior client support
- Controlled vocabularies; built-in Nomenclature, AAT, ULAN, ITIS
- IIIF image support
- Location history and barcoding
- Loans and Exhibitions
- Crates and Shipping
- Entry, Exit, and Movements
- Accession and Deaccession

12:30 – 1:15 pm

DIRECTORS AND TRUSTEES LUNCH

Spend some quality time with museum leaders from New England and beyond. NEMA Executive Director Dan Yaeger will facilitate a discussion about how museums are navigating the ongoing pandemic, social justice strategies, economic challenges, and other issues of note. Bring your questions, stories, and solutions as we work together to identify best practices as they emerge in our field.

This session is limited to directors and trustees of museums and cultural organizations.

Pre-registration is required.

Sponsored by The International Tennis Hall of Fame, Museum Search & Reference, and Tufts University Museum Studies Program

12:30 – 1:15 pm

PAG LUNCHES

Convene with your colleagues over lunch! These Professional Affinity Gatherings are open to all with interest in the field or topic. Specific discussion descriptions will be available closer to the conference. Today's gatherings include:

Curators

Join your fellow curators for a discussion on getting unstuck. You can come prepared to describe a museum problem you're stuck on, like a thorny exhibit problem or research that's at a dead end. Or, just participate in brainstorming solutions or sharing resources for getting unstuck.

PAG Chairs: Tiffini Bowers, Head, Exhibitions & Engagement and Curator for Visual and Ephemeral Collections, John Hay Library, Brown University, RI; Tegan Kehoe, Exhibit and Education Specialist, Paul S. Russell, MD Museum of Medical History and Innovation, MA

Education

Connect with fellow educators in a virtual setting. Ask questions, share ideas, offer advice, and connect with a network of peers and mentors who can continue to provide inspiration, support, and resources long after this year's conference ends.

PAG Chairs: Amanda Goodheart Parks, Director of Education, New England Air Museum, CT; Erin Wederbrook Yuskaitis, Principal, Yellow Room Consulting LLC, MA

Historic Sites

Join us for lunch and a conversation about your historic sites in a virtual setting. Bring your questions, suggestions, and triumphs to share, and enjoy this opportunity to reconnect and network with your Historic Sites peers.

PAG Chairs: Robin Sherman, Curator & Museum Manager, Castle in the Clouds, NH; Emma Stratton, Executive Director, American Independence Museum, NH

YEP PAG for Emerging Museum Professionals

Join us for lunch and meet your fellow Yeppers! Learn more about what our group offers, including information on upcoming professional development and networking events. We also want to hear from you! Share with us ideas for resources and topics that you would like to explore with us this next year.

PAG Chairs: Monica Andrews, Public Programs Associate, Shelburne Museum, VT; Lisa Evans, Interim Executive Director, St. Albans Museum, VT; Marie Palladino, Head of Educational Programs, The Mary Baker Eddy Library, MA; Emma Scheinmann, Curriculum Developer and Content Manager, National Museum of Industrial History, PA

1:00 – 1:15 pm

DEMONSTRATION STATION

Alexis Young, Sales & Marketing Manager, Crystalizations Systems Inc, NY

1:15 – 1:30 pm

DEMONSTRATION STATION

Eric Kahan, President, Collector Systems, NY

1:30 – 2:30 pm

CONCURRENT SESSIONS (60 minutes)

Build (Your Community) Back Better: Using Museum Practices for Community and Urban Planning

Looking for a potential partnership to shape the long-range future of your community? Not just its aesthetic or educational future, but its housing, transportation, equity, and climate resiliency? That (and more) is the responsibility of your local

(continued on page 8)

(continued from page 7)

planner. Get a quick introduction to planning, then hear about museum-planner partnerships that have mitigated urban heat islands, fostered pro-social behavior in public plazas, and more. Learn ways any museum can help its community plan a better future.

Speakers: Jane Buxton, Faculty of Practice, University of Rhode Island; Brad Larson, President, StoryHabitat / Brad Larson Media, MA; Betsy Loring, Principal, expLoring Exhibits and Engagement, MA

Challenging Communications

The past few years in the museum field have provided ample opportunity for responding to community challenges through communication. What happens when those communication plans go astray? This panel will review helpful tips and proactive communication strategies as well as responding to challenging topics on-the-fly.

Facilitator: Julie Arrison-Bishop, Founder, Museumtastic, MA

Speakers: Carrie Nash, Public Relations, Museum of Science, Boston, MA; Shannon Woodloe, Digital Storyteller, Delaware Art Museum, MD

Museum Mindfulness

Take a mindfulness break with meditation instructor Rhonda Schaller, who earlier this year introduced Mindfulness Based Stress Reduction practices to the NEMA community. Rhonda will lead a guided meditation and will be joined by members of the NEMA mindfulness group for an informal discussion.

Facilitator: Rhonda Schaller, Assistant Vice President for Student Affairs, Pratt Institute, NY

Sponsored by Studio Robertson

Sports Museum as a Lens for Social Justice

In conjunction with the release of *Interpreting Sports History in Museums and Historic Sites*, this session aims to encourage practitioners to utilize sports interpretation to shape a more complete and holistic understanding of our world. This session will explore an impactful collaboration at the International Tennis Hall of Fame that positions the institution as a leader in connecting the sport past and present through the Black Lives Matter movement.

Facilitator: KathrynLeann Harris, Independent Museum Professional, KathrynLeann Harris Consulting, MA



M T S
Museum Textile Services

New England's Premiere Textile Conservation Studio
museumtextiles.com | (978) 474-9200 | admin@museumtextiles.com

Speakers: Tara Mello, 7th Grade Social Studies Teacher, Thompson Middle School, RI; Doug Stark, Museum Director, International Tennis Hall of Fame, RI; Valerie Tutson, Creative Director, Rhode Island Black Storytellers

Sponsored by Harvard University Extension School, Museum Studies Program

Think Tank: Museums & Their Climate Change Impact

This session has moved to Friday, November 19 at 9:30 am.

Throw Out the Linear Path & Reimagine Your Professional Growth

The traditional idea of career growth in the museum field is linear—success means steadily climbing your way up the ladder from front-line staff to senior leadership. Let's challenge that idea by exploring new, creative models for what career growth can look like. You'll walk away with a new vision for your career trajectory in the changing job landscape, practical tools for shaping your professional goals, and a wider understanding of what it means to be a successful professional.

Facilitator: Carole Ann Penney, Strategic Career Coach, Penney Leadership, RI

Sponsored by Public History and Archives Tracks, History Department, University of Massachusetts Boston

**2:30 – 2:45 pm
BREAK**

**2:45 – 3:45 pm
CONCURRENT SESSIONS
(60 minutes)**

Digitizing Collections: A New Kind of Audience Engagement for Small Museums

Using the technology that we have on hand, we can create and shape our visitor experiences in new and engaging ways. By exploring the purpose and methods used to digitize collections, this session will explore how you can use your digitization project to generate new stories with the objects while not only increasing collections access but also creating new visitor experiences that engage and connect with the collection like never before!

Facilitator: Abby Battis, Associate Director for Collections, Historic Beverly, MA (PAG Chair)

Speaker: Jane Bowers, Exhibits Curator & Manager, Wenham Museum, MA

Sponsored by Collector Systems, Inc.

Finding Purpose Amid a Pandemic: The Struggle and Triumph in Re-Imagining Maine Maritime Museum's Education Programs

In August 2020, Maine Maritime Museum launched an unprecedented education program, the Alternative Expeditionary Learning Semester, to serve a community need for in-person learning. The challenges in designing and implementing this program led staff to reimagine their approach to museum learning and its possibilities to serve the community. By sharing our story, we hope to inspire other educators forced to redefine their methods and navigate uncharted territory brought on by the challenges of 2020.

Speakers: Luke Gates-Milardo, Museum Educator; Kurt Spiridakis, Director of Watercraft and Traditional Skills; and Sarah Timm, Manager of Education, Maine Maritime Museum

Making Exhibits that "Hack the World": Non-Virtual Alternatives to the Gallery

Free The Museum is an initiative to activate the "museum experience" in everyday places, making them sites of engagement, reflection, activism,

(continued on page 10)



**Documentary
Educational Resources**

The best in classic and contemporary ethnographic film and media



We help plan virtual or in-person screenings and provide footage for exhibitions. Discounts available for community museums.

Contact us to inquire: info@der.org

101 Water Street 5A, Watertown MA 02472 (617) 926-0491 der.org

(continued from page 9)

and learning. With “ubiquitous museology,” public spaces become cultural settings - galleries and “collections in situ.” Through examples, we’ll address the challenges of such projects and benefits - from new audiences and partnerships, to contributions of oral histories, to collection donations. Then you’ll try applying Free The Museum’s free tools on a sample location.

Facilitator: Betsy Loring, Principal, exploring exhibits & engagement, LLC, MA (PAG Chair)

Speakers: Michael Burns, Partner and Chief of Experience Strategies, Quatrefoil Associates, MD; Diane Lee, Collections Manager, Fairfield Museum and History Center, CT

Sponsored by The Arcana Workshop, LLC

Re-Imagining Workspaces as Supportive and Equitable

Can you imagine a more supportive and equitable museum field? What does that look like? How has your museum addressed issues of equitable practices this past year? We know the pandemic resulted in a financial shock to all museums, but its effect on workers has not been equally distributed to all. From layoffs to increased

caregiving responsibilities, the ramifications have been especially harsh on women and the pandemic may have long lasting consequences on racial and gender wage and employment gap. Join the Gender Equity in Museums Movement steering members to re-imagine our post-pandemic museum workspaces. Come ready to share your experiences, advice, and ideas as we develop key takeaways to move the field forward.

Facilitators: Andrea Crivello, Exhibition Manager, Christie’s, NY; Ashanti Davis, Exhibition Manager, Fleet Science Center, CA; Scarlett V. Hoey, Director of Membership and Development, New England Museum Association, MA

2:45 – 5:00 pm
DOUBLE SESSION
(120 minutes)

Engaging Facilitation in a COVID World

Join your Education PAG Co-Chairs as we reimagine frontline training for museum educators in a post-COVID world. This participatory workshop will provide managers of frontline interpretative staff with the tools they need to implement inquiry-based facilitation at their

Museum Studies



collaboration



creativity



critical thinking

CROSS-DISCIPLINARY THEORY AND PRACTICE:
education ■ art ■ science ■ history

21ST CENTURY LITERACY:
visual ■ media ■ technology ■ scientific ■ civic

CERTIFICATE OR MASTERS DEGREE
museumstudies.tufts.edu | 617.627.2320



Graduate School
of Arts and Sciences

museums as well as activities for confidence-boosting training in body language, diction, and movement. From VTS to improv, this workshop will blend fun and practicality into an impactful “how to” learning journey.

Speakers: Amanda Goodheart Parks, Director of Education, New England Air Museum, CT (PAG Chair); Erin Wederbrook Yuskaitis, Principal, Yellow Room Consulting LLC, MA (PAG Chair)

Sponsored by Collector Systems, Inc.

4:00 – 5:00 pm

CONCURRENT SESSIONS (60 minutes)

Collections Conundrums: How Collections Storage Improvement Projects Fueled a Re-Evaluation of the Museum Collection

How do you make a building constructed for “temporary storage” in the 1960s work in 2020? How do you temporarily relocate 16,000 objects while you implement improvements? How do you deal with the collections questions and new projects that arise because of these processes? Join curatorial staff from Old Sturbridge Village to learn how they have approached these questions over the course of their recent storage improvement projects.

Speakers: Rebecca Beall, Collections Manager and Curator of Textiles; Katherine Fecteau, Assistant Curator; and Brittany Guerrette, Collections and Research Public Programming Specialist, Old Sturbridge Village, MA

Sponsored by Tru Vue

Community Engagement and Co-curation in the Galleries: A Case Study from CT

Join staff at Yale Peabody Museum in discussing efforts to incorporate a DEAI lens into the museum’s human culture galleries through community engagement and co-curation. Speakers will share successes, setbacks, and lessons learned through three case studies: 1) a curatorial partnership with a local nonprofit working with Syrian refugee populations; 2) a project by a youth program to interpret the diorama hall; and 3) a formative evaluation investigating accessibility, representation, and inclusive storytelling.

Facilitator: Neeti Jain, Graduate Research Fellow, Yale Peabody Museum of Natural History, CT

Speakers: Kellen Nixon, Principal, Nixon & Co., NC; Kailen Rogers, Associate Director for Exhibitions, Yale Peabody Museum of Natural

History, CT; sci.CORPS staff: Emily Cervantes, Natasha Ghazali, Fiona Kathryn Kelly, Paula Mock

Leading Beyond your Organization: Why Joining Boards Can Expand Horizons and Contribute to Community

Serving on a board of directors is a great opportunity for professional development, networking, and service to the community, but sometimes board service can seem intimidating or inaccessible. Maybe you already have considered joining the board of NEMA or another organization you care about. In this session you’ll hear perspectives on the benefits of serving on a board, what questions to ask before you join a board, and standard expectations of board members.

Facilitator: Cathy Saunders, Curator of Education, Lippitt House Museum, RI (NEMA Board)

Speakers: Elizabeth Francis, PhD, Executive Director, Rhode Island Council for the Humanities; Keith Tavares, Capacity Building Officer, Rhode Island Foundation; Christina Turner, Director of Education & Public Programs, New Bedford Whaling Museum, MA

(continued on page 13)

LUCIDEA

ARGUS

Museum Collections Management Software

Engaging • Imaginative • Immersive
Innovative • Essential

REQUEST A FREE DEMO TODAY!
Call us at 604-278-6717
or visit us at www.lucidea.com/argus

Story Habitat™

record stories from visitors in exhibits and from home



- Storykiosk records stories in exhibits
- Online recording server gathers stories from home
- test out new exhibit ideas and evaluate current exhibits
- collect testimonials for proposals and marketing

RECORD YOUR STORY
TO ENTER A CONTEST
TO WIN 2 FREE MONTHS
OF STORY SERVICE.

"SHOW SOMETHING
YOU'VE MADE AT HOME
THIS YEAR."
RECORD YOUR STORY AT:
[WWW.TINYURL.COM
/NEMA2021](http://WWW.TINYURL.COM/NEMA2021)



www.StoryHabitat.com

(continued from page 11)

Museum Membership: Town Hall

What does your museum membership look like now, in 2021? How have visitor and member needs changed in the last 18 months? How has the shift to virtual programming and exhibits impacted member outreach, marketing and grant reporting? Join colleagues and come ready to share in this interactive town hall exploring all things membership.

Facilitators: Genevieve Burgett, Membership Manager, Historic New England, MA; Kathleen Porter, Associate Director of Membership, The Trustees, MA

5:15 – 6:15 pm

NEWCOMERS RECEPTION

New to the NEMA Conference? Join fellow newcomers for a reception filled with fun networking and engaging topic-based discussion. Bring your own beverage, snack, and smiling face.

Sponsored by Gorman Richardson Lewis Architects

PAG Chairs Wanted!

NEMA's **Professional Affinity Gatherings** are a key source of best practices, enlightened techniques, and practical wisdom.

PAG coordinators work closely with NEMA Staff on workshops and conference, organize meetups, and help improve the museum field. They're knowledgeable, passionate and a lot of fun. If you are interested in helping to lead a PAG, please contact Meg at meg.winikates@nemanet.org.

Tuesday, November 16

10:00 – 11:00 am

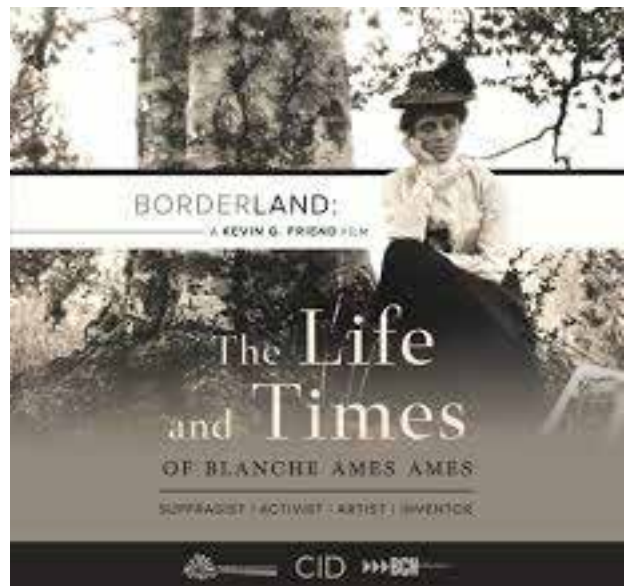
COFFEE MEET AND GREET WITH THE NEMA BOARD

Join us for an informal meet and greet with NEMA board members. Get to know our board members, find out what motivates them, and how they contribute to NEMA. What are their backgrounds? What are their interests? What kind of coffee is their favorite? See if NEMA board service is something you'd like to do in the future. Bring your questions and sit down with your favorite hot beverage for a pleasant and enlightening conversation. All are welcome to attend.

4:00 – 5:30 pm

BORDERLAND: THE LIFE & TIMES OF BLANCHE AMES AMES FILM SCREENING

Join us for a screening of **Borderland: The Life and Times of Blanche Ames Ames** (55 minutes). This film is a deep dive into the fascinating life of Ames and her quest for voter rights and women's equality. It ties the struggles of her era to today's political climate where there is much work to be done. The screening will include a post-screening Q&A discussion. All are welcome attend.



Wednesday, November 17

8:15 – 9:15 am

INDEPENDENT MUSEUM PROFESSIONALS AFFINITY GROUP BREAKFAST

Start your day with coffee and colleagues at the IMP PAG annual breakfast meeting. This session is open to all, from seasoned IMPs to those curious about being an IMP.

PAG Chairs: Ernesto Mendoza, Designer/Owner, One By Design, MA; Rebecca Migdal, Museum Consultant, Exhibit Development | Research & Writing | Project Management, MA

9:30 – 3:45 pm

EXHIBIT HALL OPEN

9:30 – 10:30 am

KEYNOTE PRESENTATION

Equity, Governance, and the Future of Culture: A Conversation with Michael J. Bobbitt

Like never before, the cultural sector is addressing the issues of racial and gender equity, power dynamics, and how institutions can become better stewards of social justice. Join us for a conversation with Michael J. Bobbitt, award-winning performing arts leader, cultural critic, and (since February) Executive Director of the Massachusetts Cultural Council, for his vision and insights into how museums and culture can contribute to a better society.

Sponsored by Collector Systems



10:30 – 10:45 am

BREAK

Explore the Exhibit Hall and chat with vendors, attend demos, and discover innovative services for our museum community.

10:30 – 10:45 am

DEMONSTRATION STATION

Patrick Gabridge, Producing Artistic Director, Plays in Place, MA

10:45 am – 12:15 pm

CONCURRENT SESSIONS

(90 minutes)

Conducting Museum Evaluations with Accessibility in Mind

How can museums gather feedback from people with disabilities so that museum experiences are more universally designed? At this session we'll discuss how rewarding it can be to design museum evaluation plans around people with disabilities. Learn how to craft an evaluation plan, recruit participants, gather and measure the feedback, and implement the information. In this session we will hear from experts as well as participants in the evaluation process.

Facilitator: Aaron Rawley, Volunteer Coordinator, Gore Place Society, MA

Speakers: Jan Crocker, Independent Project Coach, MA; Kamisha Heriveaux, Self-Advocate Content Expert, MA; Leigh Anne Lee, Manager, Inclusive Design and Cultural Projects, Institute for Human Centered Design, MA

Inclusive Philanthropy in Museums: A Unicorn or a Reality?

Today, museums across the country are called upon to create an inclusive, diverse, and equitable environment and experience for staff and visitors alike. These cultural institutions are focused on DEIA initiatives in myriad areas such as programming, collections, staff and board recruitment to name a few. But, does this priority also include fundraising efforts? Hear from panelists within the arts and culture sector about how they are defining inclusive philanthropy and incorporating it in their work. Then join breakout sessions to discuss this tricky topic in-depth.

Facilitator: Pilar Garro, Director of Development, The House of the Seven Gables Settlement Association, MA (NEMA Board)

Speakers: Eva Rosenberg, Founder & Principal, Landing Lights Consulting, MA; Heather Seger,

Executive Director, Martha's Vineyard Museum, MA; Blair Steck, Director of Inclusive Philanthropy, Peabody Essex Museum, MA

Managing the Afterlife of a Collection

What happens after the doors close permanently? For collections management professionals, the job has just begun! But how do we do it "right" and who can we talk to? Hear from representatives of three organizations as they discuss the realities of juggling collections, expectations, mental wellness, and the idea of legacy, all while navigating the intricacies of institutional closure. Bring your questions and start to build a network of peers with first-hand experience in this largely unexplored topic.

Facilitator: Laura Nemmers, Museum Collections Consultant, FL

Speakers: Stephanie Hebert, Collection Manager, Historic New England, MA; Laura Marion, Collections Coordinator, and Casey Wooster, Collections Assistant, Governor's House Library, University of Florida; Madeline Sweeney, Registrar, Vero Beach Museum of Art, FL

Sponsored by Skinner, Inc.

Other Duties as Assigned: The Varied and Various Roles of a New Executive Director

The **NEMA First-Time Executive Director Community of Practice** meets monthly to discuss challenges and share advice. In this session EDCoP members will share some of the lessons they've learned. They'll explore some of the unexpected duties of small museum directors and how new directors can learn to prioritize, delegate, and roll with the punches. Future leaders will learn tips on how to set boundaries and manage expectations for unexpected projects that fall under "other duties as assigned."

Facilitator: Kaleigh Shaughnessy, Executive Director, Whittier Birthplace, MA

Speakers: Eric Peterson, Executive Director, Metropolitan Waterworks Museum, MA; Emma Stratton, Executive Director, American Independence Museum, NH (PAG Chair); Deanna Witte-Walker, Executive Director, Southold Historical Museum, NY

The Art of the Possible: Collaborative Models for Experience Development

Museums aim to create welcoming, safe, and developmentally meaningful environments for all visitors. As daunting as it may be, institutions that serve youth and families are uniquely positioned to empower children and their caregivers to

confront and address critical issues of identity, diversity, inclusion, justice, and action in society. This session challenges attendees to rethink our roles, responsibilities, and processes -- and expand our idea of what's possible.

Facilitator: Kate Marciniac, Sr. Director of Exhibits, Boston Children's Museum, MA

Speakers: Silvia Lopez Chavez, Artist & Designer, Chavez Design Studio, MA; Stacey Mann, Independent Interpretive Planner & Learning Strategist, MA; Chanel Thervil, Artist & Educator, MA; Dan Wallis, Principal, Creative, The Square Office, MA

12:15– 12:30 pm

DEMONSTRATION STATION

Yadin Larochette, Museum and Conservation Liaison, Tru Vue, Inc., IL

12:30 – 12:45 pm

DEMONSTRATION STATION

Carlton SooHoo, Owner, Panospin360 Inc., MA

12:15 – 1:30 pm

EXHIBIT HALL

G | R | L | A
INTELLIGENT + SUSTAINABLE DESIGN

Proud partner to many of New England's finest museums and institutions.

Services offered include:

- Master Planning
- Exhibit Design Support
- Building Envelope Services
- Café and Store Design
- Archive Rooms
- Performance Spaces
- Lobby Upgrades
- Accessibility
- Classrooms
- Offices and Storage Spaces
- Sustainable Design
- Deferred Maintenance



Dedham Historical Society & Museum



Framingham History Center



International Marathon Center in Hopkinton, Massachusetts
Expected to break ground in 2023

239 South Street, Hopkinton, MA 01748 508-544-2600 grlarchitects.com



Services include:

- marketing & pr
- polycymaking
- engagement strategy
- disaster planning
- collections care
- grant writing
- staff training
- & more!

www.museumtastic.com social: @museumtastic email: julie@museumtastic.com



Harvard Extension School
HARVARD DIVISION OF CONTINUING EDUCATION

**Fall term.
Spring term.
On your terms.**

Earn your graduate museum studies degree or certificate from Harvard Extension School. Browse our flexible course options to complete courses online.

Learn more at extension.harvard.edu



12:30 – 1:15 pm

PAG LUNCHES

Convene with your colleagues over lunch! These Professional Affinity Gatherings are open to all with interest in the field or topic. Specific discussion descriptions will be available closer to the conference. Today's gatherings include:

Academic Museums & Galleries

Over the past two years, the effects of the Covid pandemic on academic museums and galleries have been particularly complicated, as we've navigated the needs of our diverse constituencies — both academic and public — alongside shifting campus and institutional policies. Join PAG co-chairs for a casual lunch to connect with fellow academic museum workers to compare notes: share the progress you've made, and the challenges you're facing this academic year. Now that we're (mostly) open for business again, what are the lessons learned from the past year, and what new adjustments are you still making in this ever-changing landscape?

PAG Chairs: Deborah W. Disston, Director, McIninch Art Gallery, Southern New Hampshire University; Meredith Fluke, Director, Iris and B. Gerald Cantor Art Gallery, College of the Holy Cross, MA

Exhibitions

Newcomers and old friends alike, if your work involves exhibits (or if you can use the word "exhibit" in a sentence, please join us! We'll move in and out of breakout rooms, where you're welcome to answer the ice-breaker about the past year, ask for some advice, or just network.

PAG Chair: Betsy Loring, Principal, expLoring exhibits & engagement, LLC, MA

Sponsored by 42 Design Fab Studio

LGBTQ+ Museum Staff & Students

Join the LGBTQ+ Museum Staff & Students PAG for an hour of virtual mixing and mingling. PAG Chairs Ali and Sam will share memories from the PAG's first year and welcome participant input for the future of this PAG. Out, closeted, questioning, and allies are encouraged to attend.

PAG Chairs: Sam Dinnie, Intern, Peabody Essex Museum and Interpreter, Paul Revere Memorial Association, MA; Ali Kane, Manager of Corporate and Foundation Relations, Tower Hill Botanic Garden, MA

Library & Archives

How has the pandemic changed our methodologies for bringing our materials to the public?

PAG Chair: Jeffrey Henry, Library Assistant, Reuben Hoar Library, MA

12:30 – 1:15 pm

MUSEUM DIRECTORS' DISCUSSION

This is an opportunity for CEO/Directors to discuss concerns and challenges in an open forum setting. Our facilitator will keep the conversation moving while we share ideas and solutions. Whether you are a seasoned or a first-time museum director, this discussion will be for CEOs of any size museum. *This session is limited to executive directors of museums and similar organizations. Pre-registration required.*

Facilitator: Sue Goganian, Director, Historic Beverly, MA (NEMA Board)

Museum Search & Reference

MARILYN HOFFMAN
EXECUTIVE SEARCH CONSULTING

Will Your Museum Be Searching for a Director, Chief Curator, or Educator?

We are a niche firm specializing in executive searches for museums.



Meet our Senior Search Consultants:

Marilyn Hoffman, Principal;
Dan Keegan, Connie Rosemont,
Scott Stevens, Lora Urbanelli



SERVING YOU BETTER:

- Strong networks. National and international recruiting, diversity recruiting
- Results exceed the high expectations of boards and directors
- Expertise; up-to-date practice from a team of 5 former directors
- Excellent service and value
- Mission-driven; bringing insight, energy, and caring to your search

Clients include:

Morgan Library, Snite/Notre Dame, Denver Art Museum, PEM, Nebraska State Museum, Boston Children's Museum, Gardner Museum, Farnsworth, Fitchburg

603-432-7929

Boston, MA | Washington, DC | Manchester, NH

SearchandRef@museum-search.com

www.museum-search.com

Quick Glance

Monday, November 15

9:30 am – 3:45 pm
Exhibit Hall Open

9:30 – 10:30 am

Welcome and Keynote Presentation

- Resilience, Healing, and Museums: A Conversation with Dr. Lisa Wong

10:30 – 10:45 am
Break

10:30 – 10:45 am
Demonstration Station

10:45 am – 12:15 pm
Concurrent Sessions

- Crowdsourcing Within Reach *Sponsored by Lucidea*
- Diversity Recruiting to Make Museum Boards, Leaders and Managers More Inclusive *Sponsored by Collector Systems*
- K-12 Museum Education in 2021
- Power, Trauma, and Integrity
- Re/Interpreting Reinterpretation

12:15 – 1:30 pm
Break

12:15 – 12:30 pm and 12:30 – 12:45 pm
Demonstration Station

12:30 – 1:15 pm

Directors and Trustees Lunch

Sponsored by The International Tennis Hall of Fame, Museum Search & Reference, and Tufts University Museum Studies Program

12:30 – 1:15 pm
PAG Lunches

- Curators
- Education
- Historic Sites
- YEP PAG for Emerging Museum Professionals

1:00 – 1:15 pm and 1:15 – 1:30 pm
Demonstration Station

1:30 – 2:30 pm
Concurrent Sessions

- Build (Your Community) Back Better
- Challenging Communications
- Museum Mindfulness *Sponsored by Studio Robertson*
- Sports Museum as a Lens for Social Justice *Sponsored by Harvard University Extension School, Museum Studies Program*
- Throw Out the Linear Path & Reimagine Your Professional Growth *Sponsored by Public History and Archives Tracks, History Department, University of Massachusetts Boston*

2:30 – 2:45 pm
Break

2:45 – 3:45 pm
Concurrent Sessions

- Digitizing Collections *Sponsored by Collector Systems, Inc.*
- Finding Purpose Amid a Pandemic
- Making Exhibits that “Hack the World” *Sponsored by The Arcana Workshop, LLC*
- Re-Imagining Workspaces as Supportive & Equitable

2:45 – 5:00 pm
Double Session

- Engaging Facilitation in a COVID World *Sponsored by Collector Systems, Inc.*

4:00 – 5:00 pm
Concurrent Sessions

- Collections Conundrums *Sponsored by Tru Vue*
- Community Engagement and Co-curation
- Leading Beyond your Organization
- Museum Membership: Town Hall

5:15 – 6:15 pm
Newcomers Reception

Sponsored by Gorman Richardson Lewis Architects

Tuesday, November 16

10:00 – 11:00 am

Coffee Meet and Greet with the NEMA Board

4:00 – 5:30 pm

Borderland: The Life & Times of Blanche Ames Ames Film Screening

Wednesday, November 17

8:15 – 9:15 am

Independent Museum Professionals Affinity Group Breakfast

9:30 am – 3:45 pm
Exhibit Hall Open

9:30 – 10:30 am
Keynote Presentation

- Equity, Governance, and the Future of Culture: A Conversation with Michael J. Bobbitt *Sponsored by Collector Systems*

10:30 – 10:45 am
Break

10:30 – 10:45 am
Demonstration Station

10:45 am – 12:15 pm

Concurrent Sessions

- ▣ Conducting Museum Evaluations with Accessibility in Mind
- ▣ Inclusive Philanthropy in Museums
- ▣ Managing the Afterlife of a Collection *Sponsored by Skinner, Inc.*
- ▣ Other Duties as Assigned
- ▣ Collaborative Models for Experience Development

12:15 – 12:30 pm and 12:30 – 12:45 pm

Demonstration Station

12:15 – 1:30 pm

Break

12:30 – 1:15 pm

The Museum Directors' Discussion

12:30 – 1:15 pm

PAG Lunches

- ▣ Academic Museums & Galleries
- ▣ Exhibitions *Sponsored by 42 Design Fab Studio*
- ▣ LGBTQ+ Museum Staff & Students
- ▣ Library & Archives

1:15 – 1:30 pm

Demonstration Station

1:30 – 2:30 pm

Concurrent Sessions

- ▣ Reimagining Your Site with Artists-in-Residence
- ▣ Financial Management Medley *Sponsored by Collector Systems*
- ▣ New England's Complicity in the Economy of Enslavement
- ▣ Podcast Listening Party!
- ▣ The Creation of a Virtual Teaching Module: This Land is Home

2:30 – 2:45 pm

Break

2:30 – 2:45 pm

Demonstration Station

2:45 – 3:45 pm

Concurrent Sessions

- ▣ Ask an HR Professional
- ▣ How to Write & Use Impact Statements for Advocacy
- ▣ Emergency Planning Tips and Tricks
- ▣ Transformations at Night: The Son Et Lumiere

2:45 – 5:00 pm

Double Session

- ▣ Inclusive Language

3:45 – 4:00 pm

Break

4:00 – 5:00 pm

Concurrent Sessions

- ▣ NEMA: Privilege, Power, and Change *Sponsored by Collector Systems*
- ▣ Regeneration Through Collaboration
- ▣ Technology and the Visitor Experience *Sponsored by Harvard University Extension School, Museum Studies Program*

5:15 – 6:15 pm

Short'n'Sweet Meet

Thursday, November 18

2:00 – 3:00 pm

GEMM Meet-Up

4:00 – 5:00 pm

Sweetheart Dancers Film Screening

Friday, November 19

9:30 am – 1:15 pm

Exhibit Hall Open

9:30 – 10:30 am

Concurrent Sessions

- ▣ Creating Inclusive Sense of Place Narratives
- ▣ Museums & Unions: Q&A
- ▣ The Emergence and Acceleration of New Virtual Membership Models
- ▣ Planning & Managing Facilities & Infrastructure Projects
- ▣ Think Tank: Museums & Their Climate Change Impact

10:30 – 10:45 am

Break

10:45 – 11:45 pm

- ▣ Career Conversation with Laura Roberts

10:45 am – 12:15 pm

Concurrent Sessions

- ▣ Challenges, Opportunities, and Growth
- ▣ Making Space: Museums Encouraging Community
- ▣ Talk Dirty to Me: Cleaning Furniture
- ▣ The Future of Museum Education

12:30 – 1:15 pm

Annual Meeting & Awards

1:30 – 2:30 pm

Concurrent Sessions

- ▣ Disaster Planning for Extended Closures
- ▣ Impactful Collections: Making Historic Data Relevant to our Most Pressing Issues
- ▣ Swinging Open the Doors on Virtual Tours in Historic House Museums
- ▣ The Coastal Maine Geopark: Community, College and Museum Collaboration



Capture^{LLC}

Visual Marketing

VISUALIZATION & 3D CAPTURE SERVICES

Help your site draw excited new and return visitors from around the world!

3D Showcases let visitors engage in your space on a deeper level, making a connection before their On-Site visit. Our technology can rapidly scan even the largest of interior spaces and is the most realistic way to experience a venue online. Archive ephemeral, artistic projects to view and share after the exhibition is over.

SCAN CODE to visit the House of Seven Gables



SCAN ME

SCAN CODE to visit the Mark Twain House



SCAN ME



SCAN ME

*Free
Consultation*

SCAN CODE to visit the
Florence Griswold Museum

*Serving
The Northeast*

Bring museums and landmarks to life by exposing their full library of rich assets.

For any exhibit or item, add detailed descriptions, photos, videos, and interviews with artists or historical figures. Seamlessly integrate the history of the space with old photos & videos of events that happened there, embedded in the precise spot where they occurred. Enable virtual visitors to tour the gift shop and buy mementos online.

- Share a simple link for easy email, text or social media sharing
- Embed HTML code on your website
- Embed pop-up tags highlighting key features with text, video & rich multimedia
- Gather analytics, take measurements, review floor plans and extract still photos
- Use for long term facility management
- Integrate with Google Maps
- .pts and .obj file formats for CAD

- Market, Communicate, Collaborate
- Make your space more accessible
- Visually Inventory Assets
- Print 4K Quality Photographs
- Built-in (VR) Virtual Reality
- Highlight Reel / Custom Curated Tour
- Provide Educational Experiences

(860) 491-5824

www.CaptureVisualMarketing.com

**Immersive 3D Tours • Photography • Aerial Imaging & Photogrammetry
Virtual/Augmented Reality • Google Street View • BIM to Point Cloud**

1:15– 1:30 pm

DEMONSTRATION STATION

Shawn Fitzmaurice, Owner and Talent, Voiceover Nerd Productions, Inc., MA

1:30 – 2:30 pm

CONCURRENT SESSIONS

(60 minutes)

Far from Formulaic: Reimagining Your Site with Artists-in-Residence

Contemporary artists can help us reimagine historic sites, objects, narratives, and interpretations in thoughtful ways that broaden audiences. We will discuss best practices, share sample agreements and process documents, and provide successful examples of Artist-in-Residence programs that bring new life and fresh interpretations to historic sites, both in-person and in the virtual realm.

Facilitator: Rebecca Beit-Aharon, Research Intern, Historic New England, MA

Speakers: Richard Haynes Jr., Artist-in-Residence, Historic New England and Associate Director of Admissions for Diversity, University of New Hampshire; Jennifer Stettler Parsons, Associate Curator, Florence Griswold Museum, CT; Ken Turino, Manager of Community Partnerships and Resource Development, Historic New England, MA

Financial Management Medley

What is contingency planning? When and how do I revise a budget? What are indirect costs? Whether you are launching your museum career or are a seasoned professional or board member looking to brush up your skill set, there are topics that stump many of us from time to time. From budget management to communications to annual reporting, this session is designed to address commonly asked questions that can help individuals at all levels of expertise and organizations of a variety of budget sizes and structures. Curated from questions raised in past NEMA conferences and with plenty of time set aside for new topics, this session provides an opportunity to fill in the blanks in your financial management vocabulary. Please join us and bring questions!

Facilitator: Rebekah Beaulieu, Director, Florence Griswold Museum, CT (NEMA Board)

Sponsored by Collector Systems

New England's Complicity in the Economy of Enslavement

Join the Atlantic Black Box and NEMA for an open forum Town Hall style session on the stories and history of people who were enslaved in New England and the region's complicity in the economy of enslavement. Where is your museum in this process and where would it like to be in the future? What is the greatest challenge to this work at your site? Come ready to share, listen, and learn during this interactive session.

Facilitators: Meadow Dibble, Founder & Executive Director, Atlantic Black Box, & Visiting Scholar at the Center for the Study of Slavery and Justice at Brown University, ME; Scarlett V. Hoey, Director of Membership and Development, New England Museum Association, MA; Kate McMahon, Ph.D., Museum Specialist, Center for the Study of Global Slavery, Office of Curatorial Affairs, Smithsonian Institution, National Museum of African American History & Culture, D.C.

Podcast Listening Party!

Gather with podcast creators as we listen to podcast excerpts and participate in a guided interactive discussion. Develop a new perspective

(continued on page 22)



CatalogIt

Imagine Loving your CMS.

Learn More
www.catalogit.app/nema

(continued from page 21)

of the podcast medium. Learn about basic podcast production on a budget. This session is designed for anyone who wants to enjoy podcasts more, and for anyone who wants to jump into podcast production. Join us for the fun experience of listening together!

Facilitator: Emily Robertson, Owner, Studio Robertson, MA

Speakers: Shawn Fitzmaurice, Owner & Talent, Voiceover Nerd Productions, MA; Alli Rico, Content Development, WA; Robert Shimp, PhD, Research and Adult Program Director, Paul Revere House, MA

The Creation of a Virtual Teaching Module: This Land is Home

Join the Community Engagement Specialist at the Haffenreffer Museum of Anthropology at Brown University, Leah Hopkins (Narragansett) as she shares how the COVID-19 pandemic restrictions paved the way for exploring digital technologies that can be used in PreK-12 classrooms. Leah gives a behind-the-scenes look at the development and technology of a new, free virtual teaching module *This Land is Home: A Seasonal*

Round in Native New England that centers Indigenous voices.

Facilitator: Leah Burgin, Manager of Museum Education and Programs, Haffenreffer Museum of Anthropology, Brown University, RI

Speaker: Leah Hopkins (Narragansett), Community Engagement Specialist, Haffenreffer Museum of Anthropology, Brown University, RI

**2:30 – 2:45 pm
BREAK**

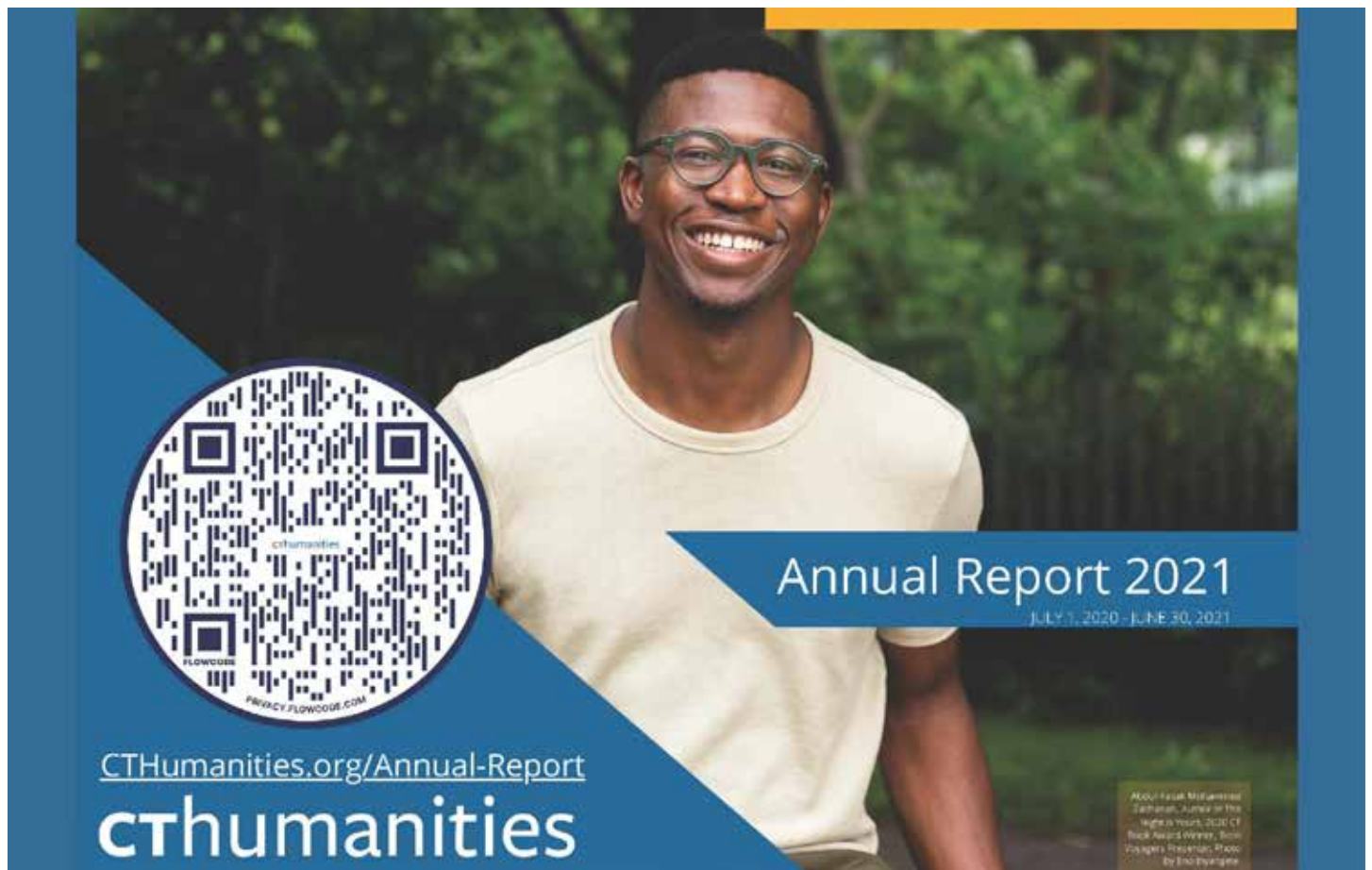
**2:30 – 2:45 pm
DEMONSTRATION STATION**

Emily Lam, Founder and CEO, Rtangent, MA

**2:45 – 3:45 pm
CONCURRENT SESSIONS
(60 minutes)**

Ask an HR Professional

Set your own agenda by bringing your human resources issues and questions to a panel of HR experts. They will respond to **pre-submitted** and



live questions about today's museum workplaces. The panel is designed to provide general advice only and will encourage an open and friendly setting for questions and discussion.

Facilitator: Kyle Pardo, Executive Vice President, AIM HR Solutions, MA

Speakers: Terry Cook, Senior Vice President, and Tom Jones, Vice President, AIM HR Solutions, MA

Bigger Impact: How to Write & Use Impact Statements for Advocacy

Public policy and public opinion are both heavily influenced by key numbers and good storytelling. In this session, we will cover how to create impact statements that convey specific stories of your institution's importance (economic, educational, environmental, and equity-centered), and how to use those statements in communication with your elected officials and the general public.

Facilitators: Raney Bench, Executive Director, Mount Desert Island Historical Society, ME (NEMA Board); Meg Winikates, Director of Engagement, New England Museum Association, MA

Emergency Planning Tips and Tricks

An emergency plan is one of the AAM's five core documents for museums, however the idea of creating one can be overwhelming if you've never written one before. Join us for an informative hour of tips that will get you started on the process. You'll also hear about an exciting class NEMA will provide in 2022 where you'll work in a structured environment to create your institution's emergency plan.

Speaker: Rebecca Elder, Cultural Heritage Preservation Consultant, Rebecca Elder Cultural Heritage Preservation, TX

Transformations at Night: The Son Et Lumiere

The Son Et Lumiere, or, Sound-and-Light Show, transforms a historic site at night through lighting, narration, and music. It tells the story of the site and provides guests with a unique immersive experience. Join the team from Clerestory Light and The Trustees to learn how Son Et Lumiere shows can be developed through collaboration.

Speakers: Chris Bocchiario, Creative Director, and Robin Donovan Bocchiario, Historian, Clerestory Light, CT; Trina Schell, Public Events and Community Outreach Manager, The Trustees / Crane Estate, MA

2:45 – 5:00 pm
DOUBLE SESSION
(120 minutes)

Inclusive Language

We all know that some word choices are more welcoming than others, whether you're writing artifact labels, exhibition catalogs, or social media posts, but it's not always a simple find-and-replace task. The language we use as institutions and individuals shapes how we and our audiences make meaning, understand museum content, and think about marginalized groups. Editor and inclusive language consultant Alex Kapitan will help us deepen our understanding of what makes language choices inclusive or exclusive and how to approach tough decisions around communication. The session, a repeat of a 2021 NEMA workshop, will cover material geared toward people who are just starting to think about these issues and people who have been grappling with them for some time.

Facilitator: Alex Kapitan, Radical Copyeditor, MA



INTERNATIONAL
TENNIS HALL OF FAME®

MUSEUM & GROUNDS NOW OPEN!

TICKETS AT
tennisfame.com

194 BELLEVUE AVENUE, NEWPORT, RI

KIDS AGES 12 + UNDER
FREE

Your site and stories... an unforgettable theatrical experience.



Engage

Inspire

Enlighten

Educate

Entertain

Contact **Plays in Place** to explore the possibilities of creating a site-specific play for your museum or historic site.

www.playsinplace.com



THE **iC4K** SERIES E
AFFORDABLE INTERACTIVE DISPLAYS



Elegantly framed in black, it includes a 4K display with knob/push button interactivity, computer, software, everything that is needed for \$999.

Q. What does the knob do?

Turning it flips through images in a folder, pushing it advances to the next folder, plays video, or menu.

Q. Can it be landscape?

Yes, portrait or landscape.

Q. How hard is it to set up and operate?

Like an appliance, plug it in to use, unplug it to turn it off.

Q. Can it have a menu, default loop, and do other functions?

Yes. Language selection, image rotations, animations & more...

Q. Is help included?

Yes. Help with content creation and software programming is included.

email: info@iC4K.com

3:45 – 4:00 pm

BREAK

Great time to visit the Exhibit Hall and stretch your legs.

4:00 – 5:00 pm

CONCURRENT SESSIONS

(60 minutes)

NEMA: Privilege, Power, and Change

The legacy of colonialism and structural racism runs through NEMA and many of our institutions. In order to change the systems that perpetuate inequality, and to be part of a just and equitable world, it is necessary to acknowledge and challenge the implicit and explicit systems of racism, white supremacy, privilege, and power. That is why, in 2021, the NEMA Board and Staff partnered with Arts Connect International to center a strategic planning effort around DEAIJ work. This work has included examining ourselves, our organizational power structures, and the NEMA mission/vision/value statements. We continue on this journey together and invite you to join us for a presentation on the evolution of this work, what it means for the field, and to help us with your own insights for the NEMA team.

Speakers: Marian Taylor Brown, Co-Director of Abundance, Arts Connect International, MA; and NEMA Staff and Board Members

Sponsored by Collector Systems

Regeneration Through Collaboration: Forging an Industrial History Network

Small history museums rarely collaborate. And when they do, it is often to support a temporary exhibition or other short-term project. In 2020, three Massachusetts museums came together behind a much more ambitious goal: to promote an entire regional community of thematically-related organizations by creating a comprehensive web-resource to inspire and encourage public visitation, engagement and learning. This session will provide insights into the benefits and challenges of long-term collaborative projects.

Speakers: John Mayer, Executive Director, Amesbury Carriage Museum, MA; Robert Perry, Executive Director, Charles River Museum of Industry and Innovation, MA; Eric Peterson, Executive Director, Metropolitan Waterworks Museum, MA

Technology and the Visitor Experience

Incorporating technology or multi-media experiences into your museum helps engage visitors while enhancing the guest experience. Knowing what forms of technology are best for your museum is crucial in terms of connecting with your visitors and fulfilling your mission. Learn about the different options for your museum. How do you choose the right one? Which best connects with a certain audience demographic? How do you determine which best complements the overall exhibit goals?

Facilitator: Doug Stark, Museum Director, International Tennis Hall of Fame, RI

Speakers: Terry Healy, Principal, HealyKohler Design, DC; Greg Sprick, Technical Director, Richard Lewis Media Group, MA

Sponsored by Harvard University Extension School, Museum Studies Program

5:15 – 6:15 pm

SHORT'N'SWEET MEET

Speed network with colleagues new and old in this quick paced, caffeinated, afternoon meet-up.

42 | design fab

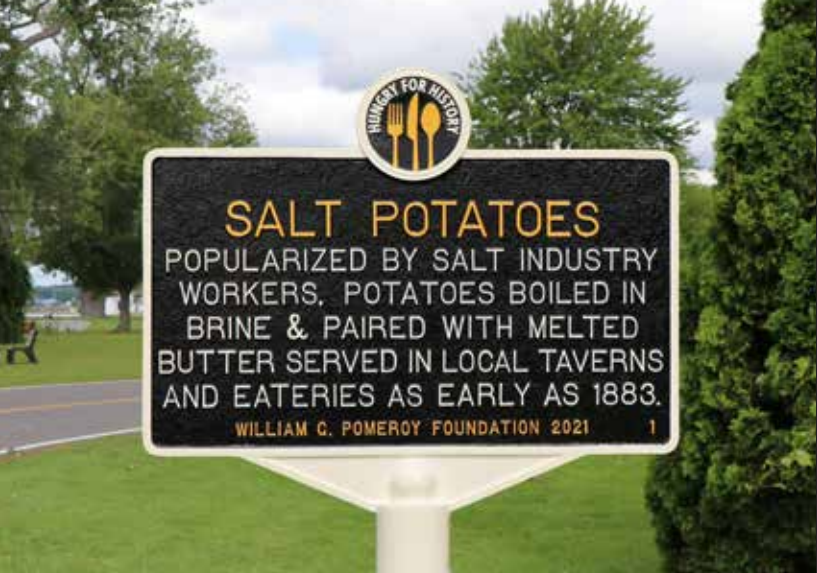
Design | Fabrication | Installation | Maintenance

42 Design Fab Studio is a full-service design and fabrication studio. We deliver exhibit solutions to a diverse client base across the country. With skills in 3D modeling and visualization, woodworking, molding and casting, and mechanical design, we will be able to turn your idea into a reality!



42designfab.com

413.203.4948



Taste how good it is to make history.

The William G. Pomeroy Foundation® is a private grant-making foundation that offers a variety of fully-funded marker grant programs; with the latest addition being the **Hungry for History™** grant program.

Hungry for History™ celebrates America's food history by telling the stories of local and regional food specialties across the United States. This program is designed to commemorate significant food dishes created prior to 1960 and the role they played in defining American culture and forging community identity. Hungry for History™ is intended to help communities nationwide put the spotlight on their renowned locally and regionally created food dishes with historic roadside markers.



Applications open Jan. 24, 2022.

To learn more, visit wgpfoundation.org

or call **315-913-4060**



Thursday, November 18

2:00 – 3:00 pm

GEMM MEET-UP

What does gender equity in the museum field mean in 2021? Come be part of a conversation with GEMM Steering Committee members Marieke Van Damme, Ashanti Davis, and Scarlett Hoey as we have an informal conversation about gender equity, the pandemic, and the museum field. Share your story and experience with others. Strategize on how we can increase equity and inclusivity in museums. Active participation is encouraged and we will be utilizing jamboards for some big picture brainstorming. All are welcome to attend.

4:00 – 5:00 pm

SWEETHEART DANCERS FILM SCREENING

Documentary Educational Resources invites you to the virtual screening of our newly released film, *Sweetheart Dancers* (13 minutes, 2019). Indigenous dancers Sean and Adrian challenge

the rulebook of San Manuel's Native American Sweetheart Special as they attempt to compete in the annual couple's competition. The film will be available for conference attendees and members during the NEMA 2021 Conference. Q&A with the film's director and cast will be hosted online. All are welcome to attend.



sweetheart dancers



a film by BEN ALEX DUPRIS

DLR

Study Public History at Boston's Public University



Graduate Programs in History, Public History, and Archives

at University of Massachusetts Boston

For more information, visit us online at www.umb.edu/history/grad
or contact Dr. Jane Becker, Director of Public History at jane.becker@umb.edu



Friday, November 19

9:30 am – 1:15 pm

EXHIBIT HALL OPEN

Make time in your schedule to visit the Exhibit Hall to see a showcase of the latest technology and tools.

9:30 – 10:30 am

CONCURRENT SESSIONS

(60 minutes)

Creating Inclusive Sense of Place Narratives

You can link museum stories to a sense of place (wherever you are) through narratives that include the wider and deeper stories, and invite visitors to find their personal connections to your resources. Hear case studies of community engagement programs that have helped visitors find links from the past to the present to their lives beyond your doors. Gain ideas for engaging and effective techniques that appeal to different learning styles. Brainstorm and network with peers during this hands-on workshop to find and create sense of place stories.

Speaker: Erica Wheeler, Consultant/Interpretive Trainer, Sense of Place Consulting, MA

Museums & Unions: Q&A

Have you ever wondered about how unions work in a museum? Join your museum colleagues and their union representatives for an ask us anything style Q&A session. This session will not be recorded and any questions submitted ahead of time will be anonymous. You can submit questions online [here](#).

Speakers: Maro Elliott, Manager of Institutional Giving, MASS MoCA; Chelsea Farrell, Organizer, Local 2110 UAW, MA; Dan Morse, Membership Development Coordinator- AFSCME Council 93, MA; Rachel Quimby, Public Programs Coordinator, EcoTarium, MA

The Emergence and Acceleration of New Virtual Membership Models

In the era of COVID-19, we've seen a surge of new membership models, and particularly "virtual memberships." Virtual memberships have taken a variety of different forms, including new digital benefits, virtual member events, and

even fully-fledged virtual membership levels. In light of this new "virtual membership" trend, this session will explore common questions, benefits, and challenges surrounding virtual memberships, featuring the stories of several membership leaders who have successfully launched virtual membership initiatives themselves.

Facilitator: Dan Sullivan, Head of Growth & Partnerships, Cuseum, MA

Speakers: Tracey Carrier, Manager of Membership & Guest Experience, Currier Museum of Art, NH; Libby Daly, Associate Director of Membership, Mystic Seaport Museum, CT; Cara Massey, Director of Annual Fund and Membership, Old Sturbridge Village, MA

Think Tank: Museums & Their Climate Change Impact (NEW DATE AND TIME)

In 2019 the NEMA Conference presented a think tank session to examine how museums were dealing with issues around global climate change. Well, a lot has happened since then: more frequent and severe weather events, greater awareness of the existential threat of climate on collections and facilities, and even NEMA's recently-announced IMLS National Leadership Grant to measure climate impact in the museum sector. Join us for an update and bring your ideas!

Facilitator: Dan Yaeger, Executive Director, New England Museum Association, MA

Torment or Triumph: Planning and Managing Facilities and Infrastructure Projects

Is a failing roof, dying HVAC, mouse-chewed wiring, or inadequate square footage barging onto your "must do" list? Should you repair or replace? Do you call your general contractor or go out to bid? If you do not have construction project management experience these can be difficult decisions to make, and mistakes are expensive. This session will focus on helping non-facilities staff make important decisions during the planning and execution of the construction process.

Facilitator: Betsy Loring, Principal, expLoring exhibits & engagement, LLC, MA (PAG Chair)

Speakers: Greg Colling, Founding Partner, Merrimack Design Architects, LLC, VT; Shana Hawrylchak, Executive Director, SEE Science Center, NH

10:45 – 11:45 am CAREER CONVERSATION WITH LAURA ROBERTS

Join Laura B. Roberts of Roberts Consulting for a look at her career and a discussion of working in the museum field.

10:30 – 10:45 am BREAK

Explore the Exhibit Hall and chat with vendors, attend demos, and discover innovative services for our museum community.

10:45 am – 12:15 pm CONCURRENT SESSIONS (90 minutes)

Challenges, Opportunities, and Growth: How to Build an Actionable Strategic Plan Despite a Global Pandemic and Resistance to Change

Launching a strategic plan at your museum or institution can be a very exciting time. It means you are ready for the next phase of growth and self-assessment! But strategic planning can also mean challenges and obstacles before and during the process. Let's take a deep dive into best practices, growth, strategic planning, and universal challenges may affect outcomes and progress. This session will kick-start your strategic planning process and ultimately your long-term sustainability.

Facilitator: Rebekah Beaulieu, Director, Florence Griswold Museum, CT (NEMA Board)

Speakers: Jessica Browning, Executive Vice President and Principal, and Jim Bush, President and Principal, The Winkler Group, SC; Matt Strekel, Director of Development, Florence Griswold Museum, MA

The Future of Museum Education: Inside/ Out of Museums

In this session we will continue conversations from the 2015 and 2018 NEMA Conferences on the future of museum education. In the wake of the COVID pandemic, which affected museum education disproportionately, 2021 seems like an important moment to convene a third "unsession" on the future of the profession. We will look at how the role of museum educators has changed due to COVID-19. What have been the positive changes and new experiences gained? How have

colleagues thought creatively about their skill sets? What does the future of the profession look like? Join us to discuss what's next for museum educators.

Facilitator: Elisabeth Nevins, Principal, Seed Education Consulting, MA

Speakers: Brooke DiGiovanni Evans, Director of Visual Arts Education, Brigham & Women's Hospital, MA (NEMA Board); Paul Fenton, Education Coordinator, Gore Place, MA; Michelle Moon, Principal, Saltworks Interpretive Services, NY; Amanda Goodheart Parks, Director of Education, New England Air Museum, CT (PAG Chair)

Making Space: Museums Encouraging Community

Museums take up a lot of space. From historic homes to granite facades, how are museums using their power and influence to support underrepresented communities and foster dialogue about pressing issues? Learn from museums who are making space for previously incarcerated folx, the LGBTQ+ community, and BIPOC folx to transform into spaces for social change.

Facilitators: Sam Dinnie, Intern, Peabody Essex Museum and Interpreter, Paul Revere Memorial Association, MA (PAG Chair); Ali Kane, Manager of Corporate and Foundation Relations, Tower Hill Botanic Garden, MA (PAG Chair)

Speakers: Morgan Bengel, Curator and Site Administrator, Old New-Gate Prison & Copper Mine, CT; Jaime Brody, Collaborations Director, The Jewish Arts Collaborative, MA; Meghan Toland, Deputy Director, Sacramento Children's Museum, CA; Lindsay Varner, Director, Rokeby Museum, VT

Talk Dirty to Me: Cleaning Furniture

Are you confused about how to care for furniture and wooden artifacts in your care? Are you afraid to do anything for fear of removing an "original finish"? Tune into this Talk Dirty to Me session for a live demonstration of conservation techniques with two veteran conservators. Learn how to assess cleanliness, gently remove soils, and protect your furniture for the future.

Speakers: Camille Breeze, Director/Chief Conservator, Museum Textile Services, MA (PAG Chair); Barrett Keating, Conservator, Barrett M. Keating Conservators, MA (PAG Chair)

12:30 – 1:15 pm

ANNUAL MEETING & AWARDS

This is your chance to celebrate your association and the people in it. We'll start out with the annual NEMA Excellence Awards, presented to colleagues who have gone "above and beyond." Highlights will also include the NEMA Lifetime Achievement Award honoring Laura B. Roberts, plus a brief "state of the association" presentation from NEMA Executive Director Dan Yaeger. The business part of the meeting will include voting on this year's slate of NEMA officers and new members, plus bylaw updates. NEMA members come exercise your vote!

LIFETIME ACHIEVEMENT AWARD

We are pleased and delighted to present the 2021 NEMA Lifetime Achievement Award to Laura B. Roberts. Throughout her career, Laura has exemplified a deep and lasting commitment to NEMA: as the organization's executive director, board member, scholarship supporter, adviser, and member of the NEMA 911 rapid response team. She was one of the organizers of the IMP PAG and now serves on the steering committee of the AAM IMP professional network. As the principal of Roberts Consulting, Laura has worked with more than 180 museums and cultural organizations around the country helping them build compelling strategic plans and strong organizations. Prior to her time at NEMA, she was director of education at the National Heritage Museum, USS Constitution Museum, and Rhode Island Historical Society, as well as executive director of the Boston Center for Adult Education. Laura is a founding member of The Museum Group, a national consortium of museum consultants, volunteers her time on several cultural boards, and is adjunct faculty at the Harvard University graduate program in Museum Studies and Bank Street College of Education's Leadership in Museum Education program.



1:30 – 2:30 pm

CONCURRENT SESSIONS

(60 minutes)

Disaster Planning for Extended Closures

Closing a cultural heritage facility may be part of an institution's seasonal schedule or caused by a disaster or stay-at-home order. Regardless of the cause, extended closures have serious implications for the preservation of an organization's collections. This session will introduce attendees to collections concerns that arise when a building is not accessed regularly and recommends practical solutions for adapting an organization's disaster plan and implementing practical mitigation and monitoring strategies in-house.

Speakers: Stephanie Garafolo, Preservation Specialist, and Alison Fulmer, Preservation Specialist, Northeast Document Conservation Center, MA

Impactful Collections: Making Historic Data Relevant to our Most Pressing Issues

Our collections contain vital information that can help us better understand the events and important issues taking place around us. Without a thorough understanding of how things were we cannot measure change over time, or plan for the future we want. This session will share ideas for how to pull data from historic collections, bring diverse partners to the table, and convene conversations about how the past can inspire us to envision a better future.

Speakers: Raney Bench, Executive Director, Mount Desert Island Historical Society, ME (NEMA Board); Catherine Schmitt, Schoodic Institute at Acadia National Park, Science Communication Specialist, ME

Swinging Open the Doors on Virtual Tours in Historic House Museums

Case studies on three virtual historic house museum tours will be used for this session in order to review how to develop a virtual tour, how to include access options, and how to maintain a virtual tour all while staying within budget. This session will highlight the advantages and disadvantages of implementing virtual tours and what happens when you virtually open the doors to your historic house museums and connect with a larger audience.

Facilitator: Abby Battis, Associate Director for Collections, Historic Beverly, MA (PAG Chair)

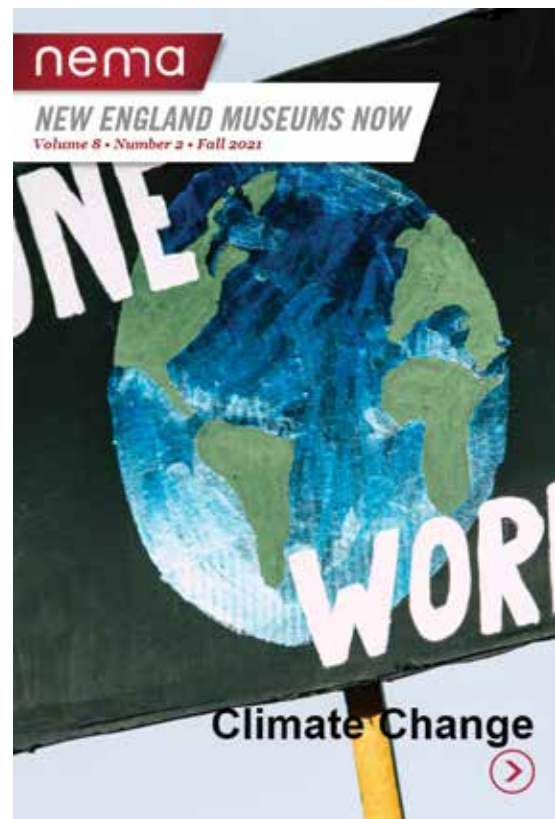
Speakers: Michael H. Maler, Regional Site Manager, Metro Boston, Historic New England, MA; Iliana Morton, Executive Director, Camron-Stanford House, CA

The Coastal Maine Geopark: Community, College and Museum Collaboration

The UNESCO-supported Geopark concept is influential in Canada, although less familiar in the US. The Coastal Maine Geopark began as a student project at College of the Atlantic and has since gathered support from museums, parks, and communities along the Maine coast. Speakers will introduce the Coastal Maine Geopark, the Geopark concept, and address issues of contextualization vs. decontextualization, community engagement in interpretation, sustainability, and collaboration between parks, museums, and institutions of higher education.

Facilitator: Alexander Goldowsky, Visiting Faculty College of the Atlantic, Principal, Interact LLC, MA

Speakers: Dru Colbert, Faculty, Arts & Design, and Sarah Hall, Anne T. & Robert M. Bass Chair in Earth Systems & GeoSciences, Carrie Graham, George B. Dorr Museum Director, and Sahra Gibson, Student, College of the Atlantic, ME



The advertisement features a large yellow circle on the left containing a stylized logo of a museum building. Below the logo, the text 'Museum Learning Hub' is written in bold black font. To the right of the circle, the text 'Free Self-Paced Training Resources for Small Museums' and 'Museum-hub.org' is displayed in white. At the bottom, a row of logos for various museum associations is shown: AMM (Association of Museum Managers), mpma (Mountain Plains Museum Association), Mid-Atlantic Association of Museums, Western Museums Association, nema (New England Museum Association), SEIIC (Southeastern Museums Conference), and the Institute of Museum and Library Services.

Sponsors

Keynote

Collector Systems

Eric Kahan

Phone: (212) 431-0897

info@collectorsystems.com

www.collectorsystems.com

Collector Systems is the leading cloud-based solution for museums, preservation societies, libraries, archivists, historic homes, foundations, and private collectors. Our powerful and intuitive program lets you access, manage, and share your collection securely from any web-enabled device. With Collector Systems, your CMS works for you - not the other way around.

Platinum

42 Design Fab Studio Inc.

Phone: (413) 203-4948

info@42designfab.com

www.42designfab.com

42 Design Fab Studio is a full service design/build studio that provides exhibits, themed environments, and custom creations to a diverse client base. Our team of skilled designers and craftsmen work collaboratively with each other and our clients in order to develop the best solutions to any design challenge.

CatalogIt

Joy Tahan Ruddell

marketing@catalog / info@catalogit.app

www.catalogit.app

CatalogIt--a powerful, full-featured, collaborative and intuitive software platform for all types of collections. As a cloud-based CMS, CatalogIt empowers your staff/volunteers to work simultaneously, securely viewing and editing records anywhere, anytime, on mobile and desktop devices. The CatalogIt HUB enables quick, easy and selective publishing of collections making them available to the world.

Gorman Richardson Lewis Architects

Leigh Walker

Phone: (508) 544-2600

LWalker@grlarchitects.com

www.grlarchitects.com

Gorman Richardson Lewis Architects offers a full range of services specifically responsive to museums including historic restoration, ADA accessibility, building envelope analysis, archive planning, exhibit support services, interior design, sustainable design, and future visioning. GRLA's culture is based on creativity and collaboration, and we extend those values to each project.

Harvard Extension School, Museum Studies Program

Katherine Burton-Jones, Director, Graduate Program in Museum Studies

Phone: (617) 496-4966

kathy_jones@harvard.edu

www.extension.harvard.edu/degrees-certificates/museum-studies

Whether you're interested in collections management, exhibitions, education, or another aspect of museum work, the Museum Studies Graduate Program at Harvard Extension School can help you embark on a successful career in the industry. In courses that connect theory and practice, you investigate the challenges confronting museums today.

The International Tennis Hall of Fame

Phone: (401) 849-3990

newport@tennisfame.com

www.tennisfame.com

The International Tennis Hall of Fame is dedicated to preserving and celebrating tennis history, and inspiring future generations. Located in the historic Newport Casino, where the first U.S. National Championships was played in 1881, the Hall of Fame museum pays tribute to the sport's legends and chronicles the tennis history in a comprehensive interactive museum.

Museum Search & Reference

Marilyn Hoffman, Executive Search Consultant & Principal

Scott Stevens, Dan Keegan, Connie Rosemont, Ida Tomlin and Lora Urbanelli, Senior Search Consultants

Boston, MA/Washington, DC/Manchester, NH

Phone: (603) 432-7929

searchandref@museum-search.com

www.museum-search.com

Executive Search for Museums. Team of former directors offer superior service for Director, Curator, Educator searches. Growing firm with outstanding placement/retention record. Recent clients: The Morgan Library, Denver Art Museum, Royal Ontario Museum, Park City Museum, Erie Art Museum, New Bedford Whaling Museum. Visit www.museum-search.com.

Tufts University Museum Studies Program

Angela Foss, Program Administrator

Phone: (617) 627-2320

angela.foss@tufts.edu

museumstudies.tufts.edu

Tufts University's Museum Studies Program (certificate or degree) prepares newcomers to the field and enhances the skills of current museum professionals. Learn about audience engagement, collections management, exhibition development, evaluation, digital media, fundraising, and more. Summer courses are open to all. Help shape the future of museums. Visit our website listed above.

University of Massachusetts Boston, Public History Program

Jane Becker, Director of Public History

History Department

Phone: (617) 287-6860

jane.becker@umb.edu

www.umb.edu/academics/cla/history/grad/ma/public_history

UMass Boston offers two face-to-face options for studying public history: History MA/Public History Track, and the graduate level Public History Certificate. Both options prepare students for careers in history working with and for the public in a variety of settings. We support community endeavors to document, preserve, and interpret their histories, and partner with regional historical organizations.

Gold

Arcana Workshop, LLC

Mike Turner

Phone: (802) 989-9499

mike@arcanaworkshop.com

www.arcanaworkshop.com

We create sculptures, models & custom fabrications to help our clients tell stories.

Projects ranged from whimsical sculptures at Ben & Jerry's to hyper-realistic dinosaurs, tiny detailed models up to a 20' historical airplane hanging in the Burlington International Airport. In 2021, we completed a traveling interactive exhibit about recycling and composting.

Lucidea

Phone: (604) 278-6717

sales@lucidea.com

lucidea.com

Make your wonderful collections accessible, visible, and relevant, with Lucidea's feature-rich and comprehensive collections management software, solving today's museum challenges—and ready for tomorrow. Web-based Argus is continuously enhanced based on over 25 years supporting museums of all sizes and budgets. Show, tell, engage, and inspire visitors the world over.

Skinner, Inc.

Phone: (508)-970-3240

www.skinnerinc.com

Founded over four decades ago, Skinner offers more than 60 auctions annually. Skinner auctions reach an international audience and showcase the unique, rare, and beautiful in dozens of categories, including the fine and decorative arts, jewelry, modern design, musical instruments, science and technology, wine, and many others.

Tru Vue

Dianna Kornita

Phone: (708) 805-6300

dkornita@tru-vue.com

www.tru-vue.com/museums

Tru Vue anti-reflective acrylic and glass solutions, including Optium® Museum Acrylic and UltraVue® Laminated Glass, are trusted to protect and display fine art and cultural heritage across the globe. TruLife® Acrylic reveals the brilliance of fine art, signage, and print images in facemount and direct print applications.

Silver

Studio Robertson

Emily Robertson
emily@studiorobertson.net
www.studiorobertson.net
Creative project management for museums. Giving voice to your great ideas in audio production or marketing. Emily Robertson, owner and founder, has been a NEMA member since 2004. Based in Boston, MA and serving clients throughout New England and beyond. Visit studiorobertson.net to connect with Emily.

Bronze

Borderland: The Life & Times of Blanche Ames Ames

Phone: (508) 238-9111
kfriend@bcnproductions.com
www.borderlandthedocumentary.com
This film chronicles the life of a woman who was born in the 19th century, worked to change the 20th century, and whose wisdom still resonates in the 21st century. The filmmaker: BCN Productions is a film/video multimedia broadcast production company specializing in business communication, live event production, broadcast television, and documentary filmmaking.

Documentary Educational Resources

Phone: (617) 926-0491
info@der.org / www.der.org
Founded in 1968, Documentary Educational Resources stewards a collection of nearly 900 ethnographic and non-fiction films reflecting community stories and individual lives from around the globe. We are committed to creating greater access to and culturally responsive engagement with the films in our catalogue and extending our services to artists of all backgrounds.

Museum Insights

Guy Hermann
Phone: (860) 857-7363
guy@museuminsights.com
www.museuminsights.com
Museum Insights helps museums plan for long-term growth and change. Our strategic master plans, pre-design architectural plans, operational feasibility studies, and capital project plans result in sustainable museums that people love and funders support.

Museum Textile Services

Camille Myers Breeze
Phone: (978) 474-9200
admin@museumtextiles.com
www.museumtextiles.com
Founded in 1999, Museum Textile Services is one of just a handful of independent conservation studios that specialize in preserving textiles that are under the care of private individuals, cultural heritage institutions, and government agencies.

Quatrefoil Associates

J Michael Feters
mfeters@quatrefoil.com
www.quatrefoil.com
Re-examining your visitor experience and exhibits? Quatrefoil's experienced designers and project managers provide planning, design (2D and 3D), interactive and implementation services to institutions across the US. Visit www.quatrefoil.com to learn more and contact mfeters@quatrefoil.com to talk about how we can help you with your next project.

Underwriting Scholarship Partner

Connecticut Humanities

Jason Mancini
Phone: (860) 685-2260
jmancini@cthumanities.org
cthumanities.org
Connecticut Humanities encourages curiosity, understanding and critical thinking, providing leadership through grants, partnerships and collaborative programs. Our vision is an engaged, informed Connecticut.

Connecticut Office of the Arts

Elizabeth Shapiro
Phone: (860) 500-2360
Elizabeth.Shapiro@ct.gov
https://portal.ct.gov/DECD/Content/Arts-Culture/About_Arts_Office/About-Office-of-Arts
The Office of the Arts is the state agency charged with fostering the health of Connecticut's creative economy. Part of the state's Department of Economic and Community Development, the Office of the Arts is funded by the State of Connecticut as well as the National Endowment for the Arts.

History Cambridge

Marieke Van Damme
Phone: (617) 547-4252
info@cambridgehistory.org
historycambridge.org

Here in Cambridge, we don't do history for history's sake. It isn't enough to present history as events that happened. We need to dig deeper, and answer "so what?" and "who cares?" Our humanities-focused approach to tackling contemporary issues through conversation and perspective-taking is one we're proud of.

Mass Cultural Council

Phone: (617) 858-2700
info@mcc.org / massculturalcouncil.org
Mass Cultural Council works to elevate our rich cultural life in Massachusetts. We partner with communities across the Commonwealth to expand access, improve education, promote diversity, and encourage excellence in the arts, humanities, and sciences. Through our efforts, we make our state a better place to live, work, and visit for everyone.

MassHumanities

Brian Boyles
Phone: (413) 584-8440
bboyles@masshumanities.org
masshumanities.org
Our mission is to lead and support programs using history, literature and other humanities disciplines to improve civic life in Massachusetts. We do this through grants, programs, and partnerships with nonprofits around the Commonwealth. Our work is made possible by the National Endowment for the Humanities, Mass Cultural Council, and the generosity of our donors.

Rhode Island Council for the Humanities

Phone: (401) 273-2250
info@rihumanities.org
rihumanities.org
The Rhode Island Council for the Humanities seeds, supports, and strengthens public history, cultural heritage, civic education, and community engagement by and for all Rhode Islanders. As the only dedicated source of funding for public humanities in Rhode Island, we are proud to support museums, libraries, historic sites, schools, preservation and historical societies, community and cultural organizations, individual researchers and documentary filmmakers to bring Rhode Island's stories to life and to amplify the state's many diverse voices.

Vermont Humanities

Phone: (802) 262-2626
info@vermonthumanities.org
www.vermonthumanities.org
Vermont Humanities seeks to engage all Vermonters in the world of ideas, foster a culture of thoughtfulness, and inspire a lifelong love of reading and learning.

Exhibitors

42 Design Fab Studio Inc.

(see Sponsor listing)

Sponsor

Almont Green Corp.

Phone: (978) 853-0084
ag@almontgreen.com
almontgreen.com / ic4k.com
An Almont Green Story: The meeting begins - participants with arms crossed. Money is tight. Clock ticking. Everything must work. It's a backdrop where we thrive, designing and building what you want, when you want it. Exceeding expectations with content creation, software programming, monitors, projection, knobs, switches, touchscreens - experience.

Arcana Workshop, LLC

(see Sponsor listing)

Sponsor

Brad Larson / StoryHabitat

Brad Larson
Phone: (781) 784-1602
info@bradlarsen.com / www.bradlarsen.com
Brad Larson / StoryHabitat provides a platform for adding visitors voices to exhibits. Our new online StorySurvey tool allows museums to gather video stories using visitors own devices at home. Allow visitors to participate in exhibits even when physical visits are difficult in a time of covid-19.

Collector Systems

(see Sponsor listing)

Sponsor

Crystalizations Systems, Inc.

Alexis Young

Phone: (631) 467-0090

Info@csistorage.com

www.csistorage.com

CSI solutions for these uncertain times - Our PerfectFit Moving Painting Storage kit, Rolled Textile Storage kit and Transporter Line systems are innovative, affordable, museum and private collections specific storage solutions that will remove uncertainties and meet your collection management goals, short term and long term.

Frameless Technologies, LLC

Michaela Gaaserud

Phone: (703) 868-8564

mgaaserud@framelesstechnologies.com

www.framelesstechnologies.com

Frameless Technologies creates immersive exhibits and content for museums to attract and engage visitors and discover breakthrough methods for education and research. We develop interactive exhibits, virtual galleries, and immersive outreach/field trips utilizing VR, AR, 3D Artifact Modeling and archiving (through photogrammetry), aerial maps, touchscreen technology and virtual tours.

The Gilder Lehrman Institute of American History

Phone: (646) 366.9666 x 147

exhibitions@gilderlehrman.org

www.gilderlehrman.org

The Gilder Lehrman Institute of American History, a 501(c)(3) nonprofit public charity, uses its rich collection and network of eminent historians to provide teachers, students, and the general public with access to primary sources. Its mission is to promote the knowledge and understanding of American history through educational programs and resources.

John Brown Lives!

Phone: (518) 744-7112

info@johnbrownlives.org

johnbrownlives.org

Since 1999, JBL! has helped people understand the intersection between history and human rights. One of our earliest and most enduring projects is "Dreaming of Timbuctoo," a traveling exhibit launched in 2001 that tells the story of a radical plan to give 120,000 acres of Adirondack land to 3,000 free black New Yorkers to circumvent racial barriers to voting in antebellum New York.

KLEIO!

Siobhan O'Shaughnessy

siobhan@kleio.global

kleio.global

What does history smell like? KLEIO brings the past to life by activating one of your most powerful senses: your sense of smell. Named after the Ancient Greek muse of history, KLEIO recreates the aromas of the past in candle form, offering a truly multisensory experience for visitors and supporters of museums and historic properties.

Museumtastic

Julie Arrison-Bishop

julie@museumtastic.com

www.museumtastic.com

Our goal at MuseumTastic is to provide fantastic work for small museums and nonprofits. Our founder, Julie Arrison-Bishop has extensive experience in small museums, historic sites, and nonprofits and access to professional freelance partners and resources. MuseumTastic is committed to providing a range of pricing that makes resources available to small museums, historic sites, and nonprofits. Your organization will be able to afford to get work done and check projects off their to-do lists. This business model encourages fair pay for consultants and excellent project results for our clients.

Nationwide Security Corporation

Brian Gouin, Senior Security Consultant

Phone: (203)-785-0300 ext 4115

Cell: (203) 800-1154

BrianG@nationwidesecuritycorp.com

www.nationwidesecuritycorp.com

Nationwide Security Corporation provides Security Alarm Services to Cultural Properties throughout New England. These services include Intrusion, Fire, Video Surveillance, Access Control, 24/7 Monitoring, and Security Consulting services. We are highly experienced and skilled security practitioners with experience in all types of cultural institutions.

Panospin360

Carlton SooHoo

Phone: (781) 738-3024

carltonsoohoo@gmail.com

panospin.com

Panospin360 is a full service commercial photography studio specializing in 360° Virtual Tours. Interactive virtual tours boost search result rankings and help convert website visitors into in-person visits. Since 2005, Panospin360 has photographed tours for hospitality venues, universities, conference centers, medical facilities, corporations, and retail stores, nationwide.

PastPerfect Software, Inc.

Sara Van De Carr, Vice President, Operations
Phone: (800) 562-6080 x1110
sara@museumsoftware.com
www.museumsoftware.com

Designed by museum professionals for museum professionals, PastPerfect offers desktop and cloud based software that combines collection and contact management into one easy to use software package. First released in 1998, PastPerfect has transformed how museums of all sizes catalog collections and manage relationships with members and donors.

Plays in Place

Patrick Gabridge
patrick@playsinplace.com / playsinplace.com
Plays in Place works in partnership with museums, historic sites, and other cultural institutions to create exciting site-specific theatrical plays and presentations. Our experienced team of theatre-makers can help engage audiences with your site in vibrant new ways, and also provide opportunities for education, exhibit enhancement, and board and donor development. Your institution has a dramatic story to tell. We will write and produce a play uniquely suited to your site, your audience, and your institutional goals. More than a costumed interpretation, we will create a new work of art for you and your visitors that will bring your site to life.

Public Art for Racial Justice Education (PARJE)

racialjusticeart@gmail.com
www.racialjusticeart.org
Public Art For Racial Justice Education is devoted to bringing communities together to achieve racial justice through art. We create projects that create, educate, and engage, ranging from providing kid-friendly coloring book pages to adult-oriented art talks by leading BIPOC cultural figures.

Rtangent

Emily Lam
Phone: (617) 453-8315
ewl@rtangent.com / rtangent.com
Rtangent is the developer of Guided™, a platform for hosting live and self-guided virtual tours for museums and galleries. Rtangent engages with museums to collect, narrate, and host digital assets for supporting experiences that increase access to exhibits and physical spaces. Rtangent is a woman-owned technology company founded in 2020.

Studio Robertson (see Sponsor listing)

Sun Associates

Jeff Sun, Director
Phone: (978) 251-1600 x.204
jsun@sun-associates.com
www.sun-associates.com
Sun Associates works with museums and other informal educational institutions to evaluate the impact of programming on teachers, students and the public through a collaborative process of developing performance indicators, customized data collection and analysis. We help organizations connect educational goals with clear and measurable actions to produce learning outcomes.

Tru Vue (see Sponsor listing)

Voiceover Nerd Productions, Inc. VO by Shawn Fitzmaurice

Phone: (617) 285-4610
shawn@voiceovernerd.com
voiceovernerd.com
When you need a voiceover recording for exhibits, podcasts, PSAs, or anything, I can help! As a 30 year museum professional (MOS Boston and Kaleideum in Winston-Salem) and a podcast / Broadcast host and producer, I am suited to understanding your museum's voice and audio production needs. Come say hi!

Where Are All The Black People At

Archy LaSalle
Phone: (617) 835-8802
wherearealltheblackpeopleat@gmail.com
www.wherearealltheblackpeopleat.com
WHERE ARE ALL THE BLACK PEOPLE AT is a grassroots organization made up of a team of artists, writers, educators, and social activists. Our work involves reaching out to art museums to work with them to address the lack of representation of Black and Brown artists in their permanent collections.

Sponsor

Sponsor